

HAVENS CENTER Award for Lifetime
Contribution to Critical Scholarship

JOIN

HOWARD ZINN

Historian, Playwright, Social Activist,
author of *A People's History of the
United States* and the forthcoming
A Power Governments Cannot Suppress

**'THE USES OF HISTORY AND
THE WAR ON TERRORISM'**

**THURSDAY, OCTOBER 5, 7PM
ORPHEUM THEATRE, 216 STATE ST., MADISON**

ANNOUNCEMENT

The Award Ceremony and Lecture will be preceded by "An Evening with Zinn" reception and fundraising event in the Orpheum Lobby Restaurant starting at 5:00 pm for the Havens Center, Liberty Tree, and the Progressive Magazine. For more information, contact info@havenscenter.org or 608-262-0854 or visit www.havenscenter.org.

**FREE AND OPEN TO THE PUBLIC
CO-SPONSORED BY LIBERTY TREE
AND THE PROGRESSIVE MAGAZINE**

Sociology 125
Lecture 8
Monday October 2, 2006

Consumerism

Office hours this week:
Thursday 9-12

ADDITIONAL READING ON HEALTH CARE
Philipp Longman, "The Best Care Anywhere"

Available on course website:

<http://www.ssc.wisc.edu/~wright/Sociology-125-2006.htm>

Big Take-Home Message from lecture on Transportation

For the free market to enable people to make efficient choices two things must be true:

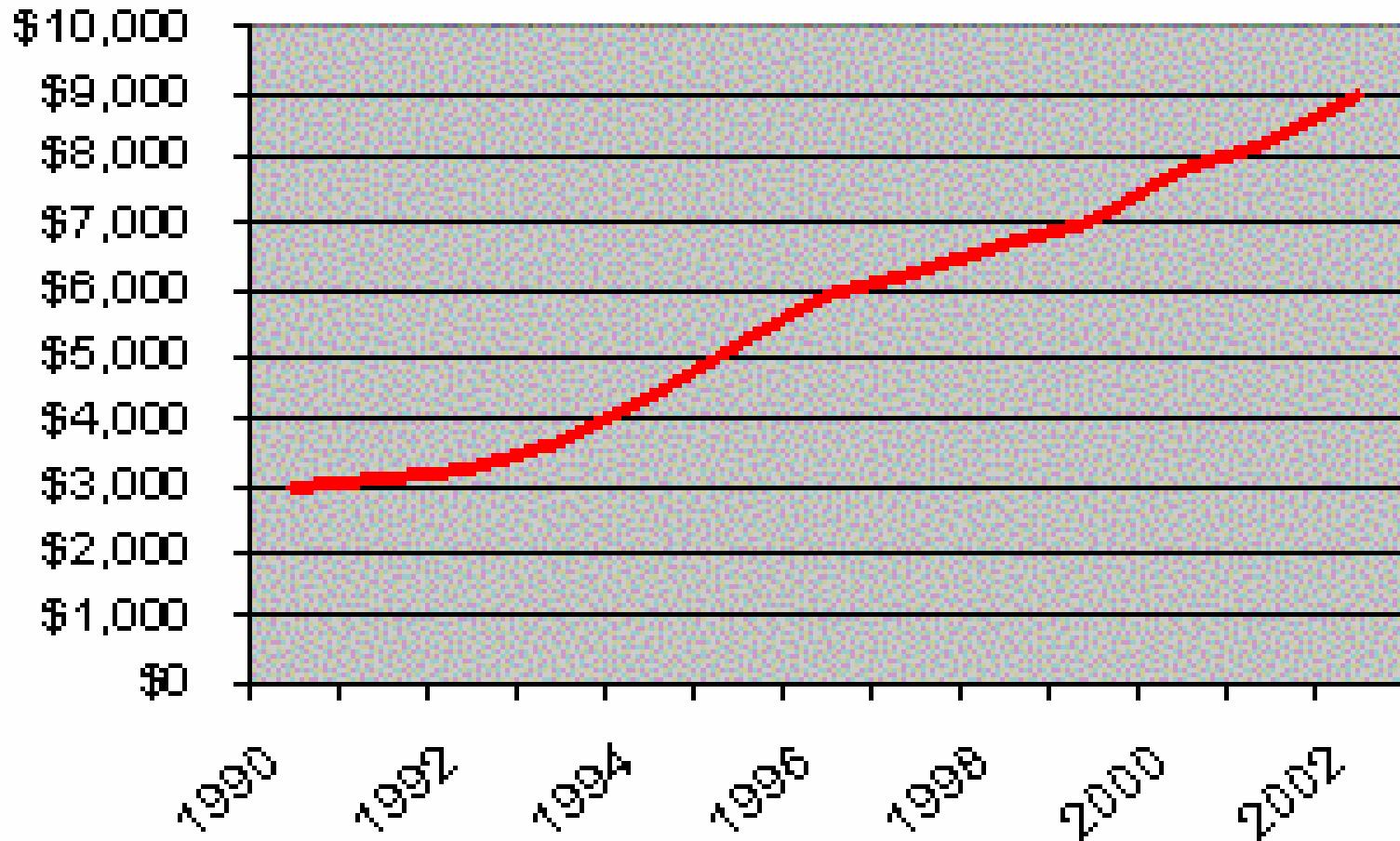
- 1. There are no significant externalities – positive or negative – to your individual choice: what you chose does not affect other people.**
- 2. The full range of feasible alternatives from which to make your choices can itself be provided by the market.**

Transportation violates both of these principles:

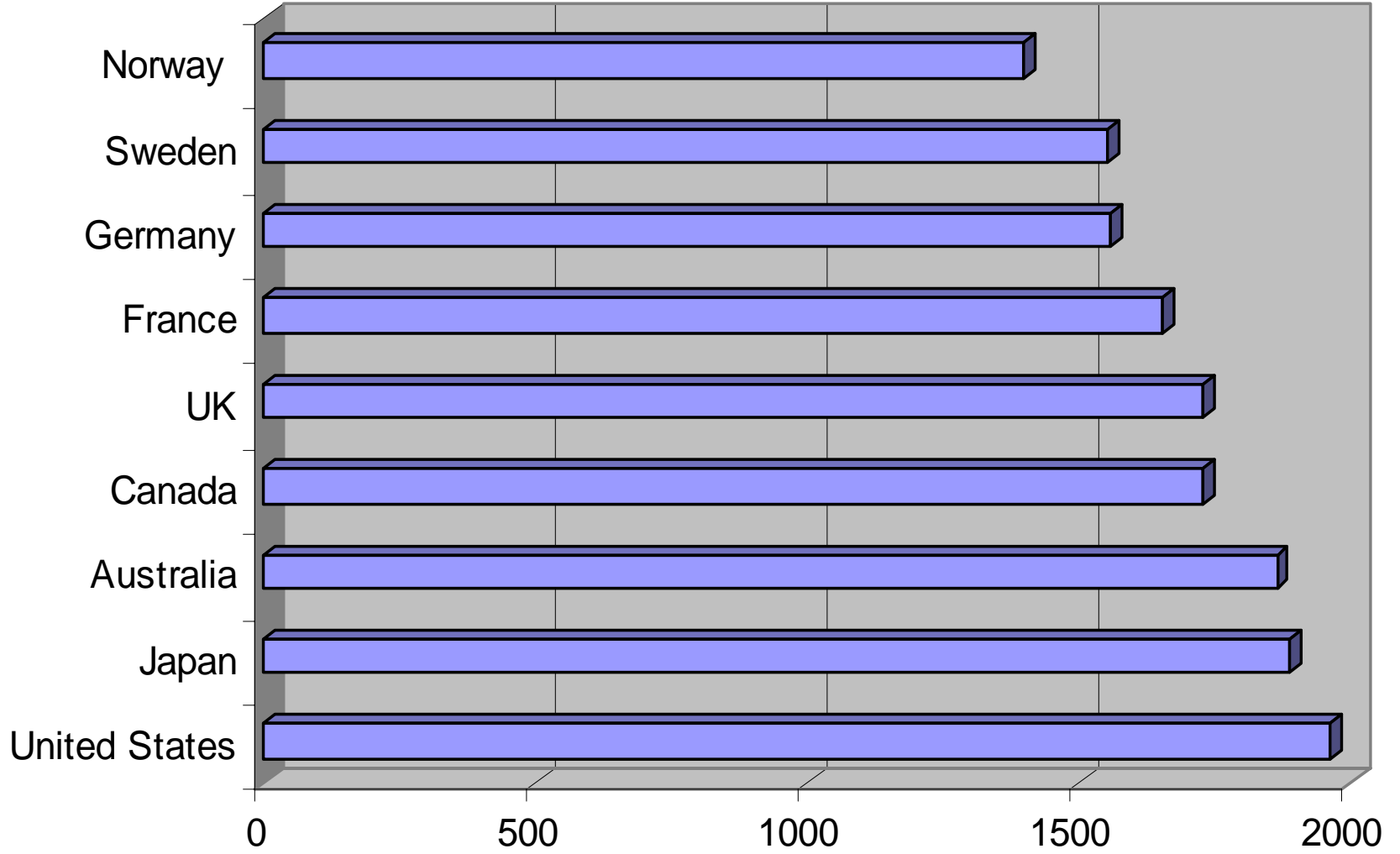
People will make very different private choices depending upon whether or not there exists a good, efficient, cheap public transportation option, *but the market itself can never provide this even if it would be economically efficient to do so.*

Average credit card debt

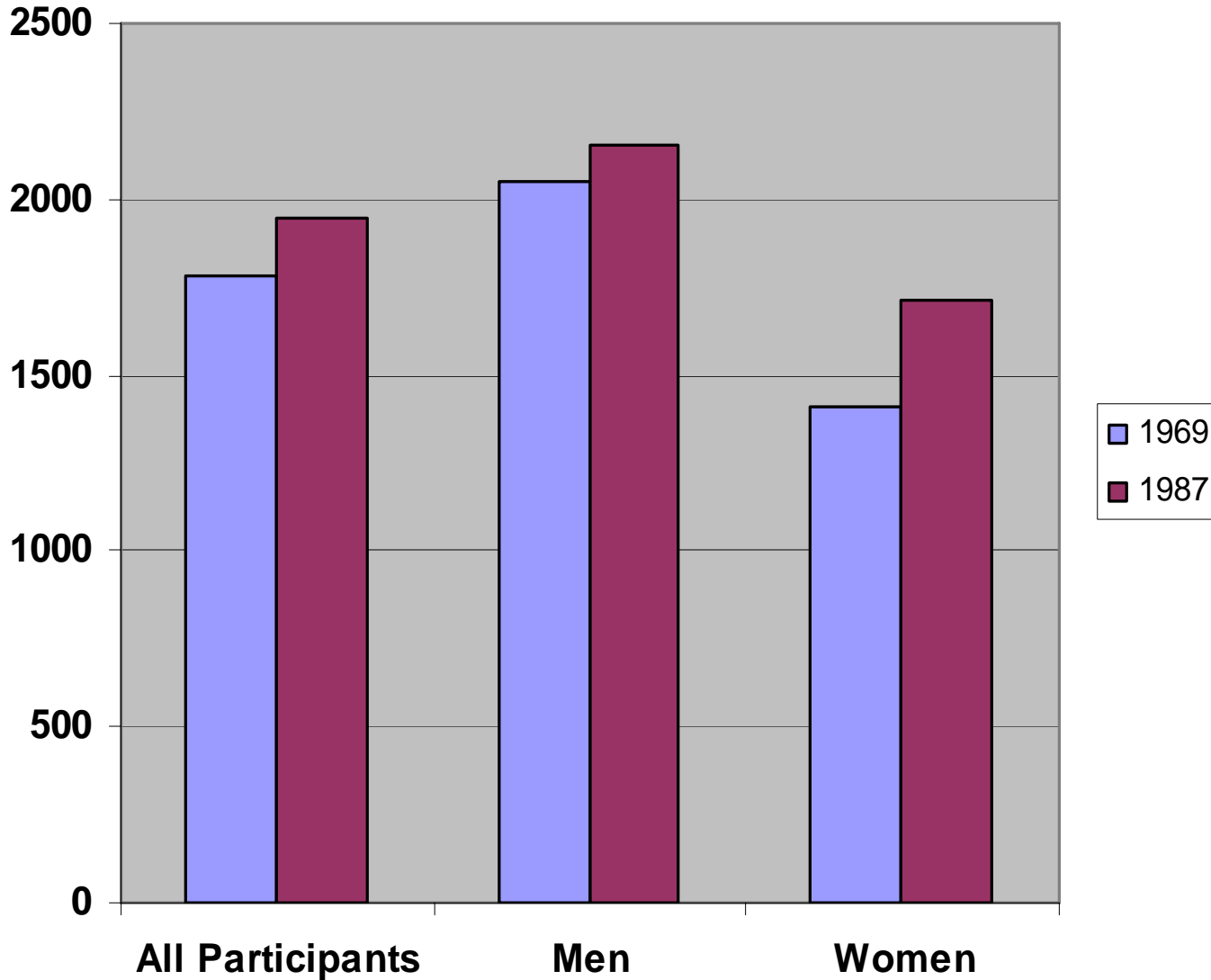
in households with at least one credit card



Hours worked per year, 1997

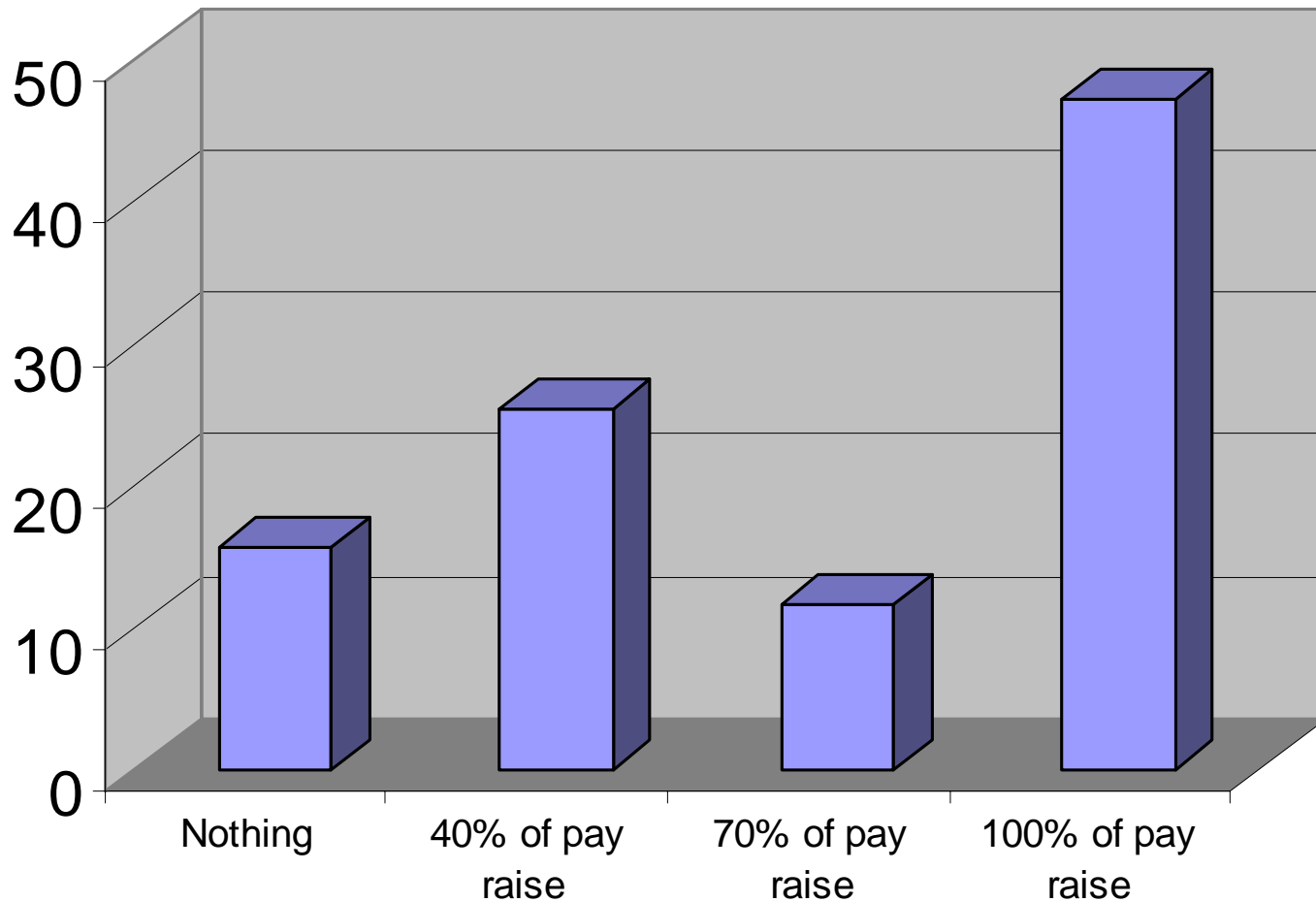


Change in Annual Hours Worked, 1969-1987



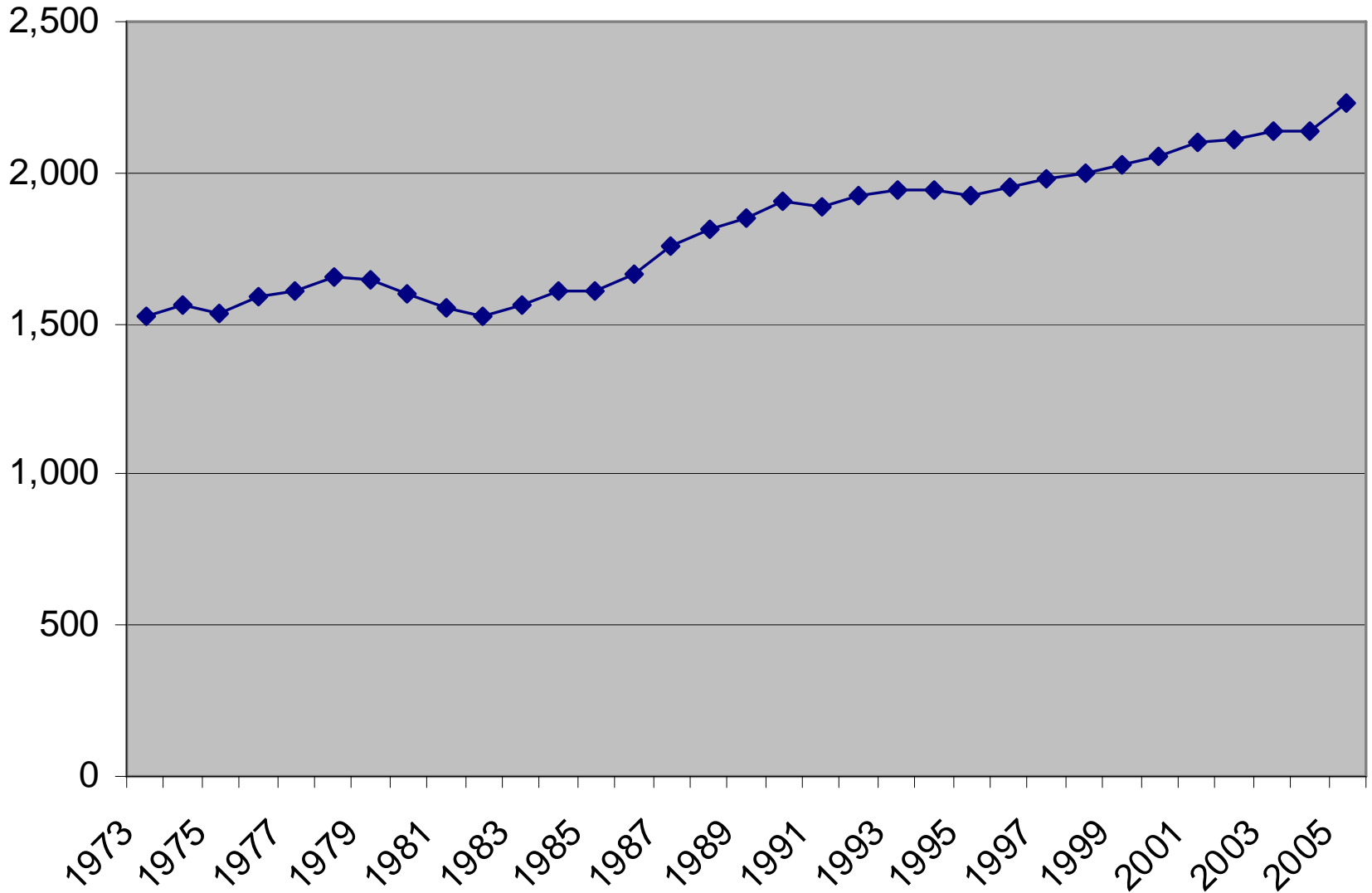
From Juliet Schor, *The Overworked American*, p. 129

The percentage of workers who would give up different proportions of a future pay raise for additional leisure?

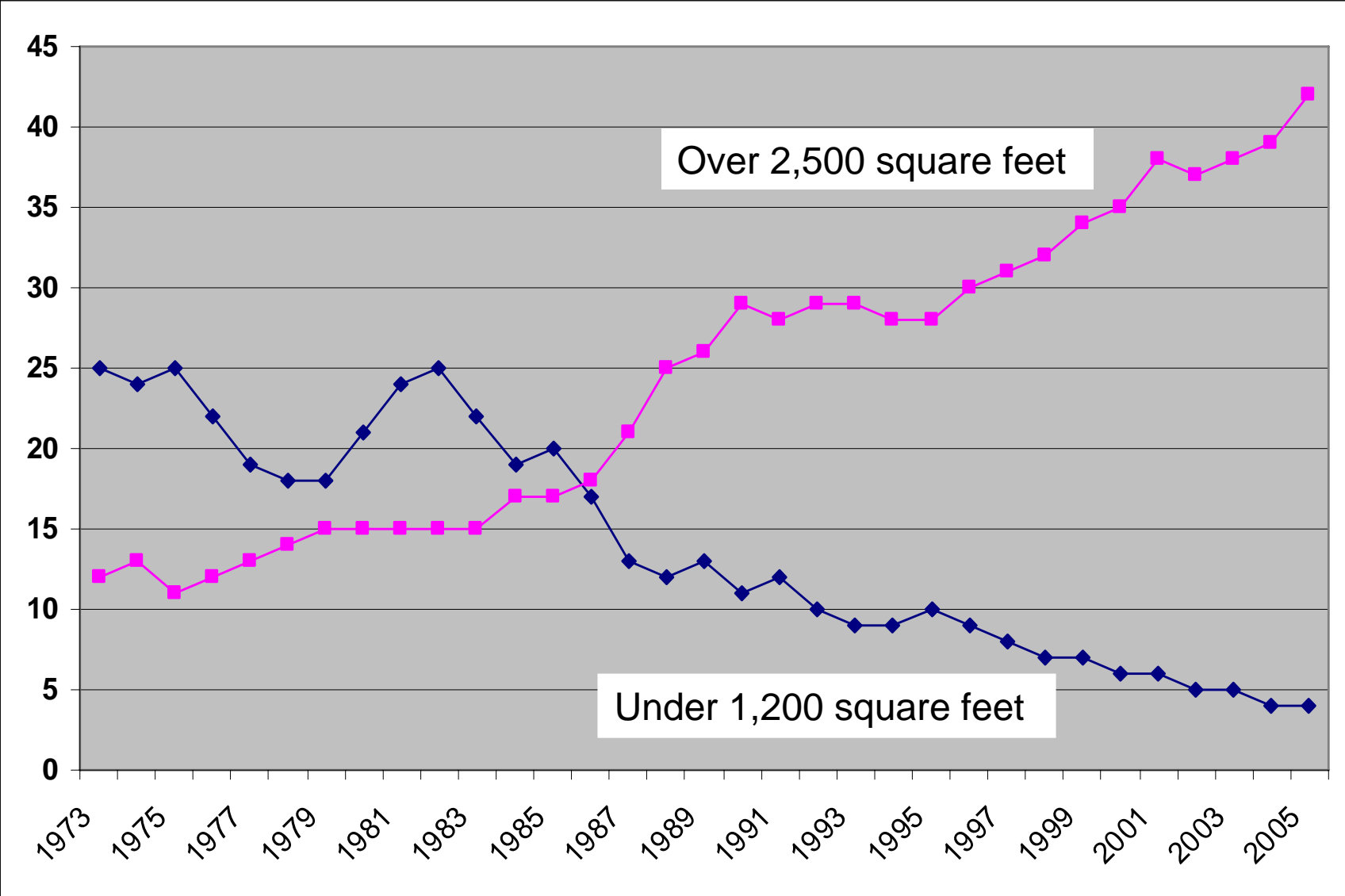


From Juliet Schor, *The Overworked American*, p. 130

Median square feet of new home construction 1973-2005



% of new home construction



Construction of Small & Big houses, 1973-2005