

Table 1. Characteristics of Selected Jobs in different Job Quality Deciles

1992-99 Job Quality deciles	1992 median hourly earnings	Three largest jobs within each decile		Number 1992	Number 1999	% of labor force in decile,	% of labor force in decile,	Numbe r of jobs in the
		Occupation	Industry					
lowest decile	\$7.41	retail sales workers food services health services	retail trade retail trade other medical service	235360 1 187690	2900945 2376842 1145535	11.4%	12.2%	65
2nd decile	\$8.99	machine operators/tenders clerical and other admin. support clerical and other admin. support	manuf. nondurable goods retail trade educational service	222069 5 569979	1981976 646374 643314	10.5%	9.8%	96
3rd decile	\$10.12	clerical and other admin. support construction laborer cleaning/building services	FIRE construction educational service	150359 1 510995	1625367 764673 377019	8.2%	7.8%	91
4th decile	\$10.80	sales supervisors/ proprietors machine operators/tenders fabricators, assemblers, inspectors,	retail trade manuf. durable goods manuf. durable goods	169265 9 158422	2185121 1748363 1636704	10.1%	9.2%	40
5th decile	\$11.87	motor vehicle operators other exec. admin. mgrs. mechanics/ repairers	transportation retail trade business/ repair service	114779 1 893412	1432757 1094965 777886	10.4%	9.2%	76
6th decile	\$13.27	construction trades other precision production	construction manuf. durable goods	223044 4	3137593 1753126	9.9%	9.8%	62
7th decile	\$14.97	sales reps, commodities mechanics/ repairers	wholesale trade manuf. durable goods	822548 558541	828177 612767	9.6%	9.6%	107
8th decile	\$16.47	teachers except college/ university protective services sales reps, finance/business	educational service public administration FIRE	298699 116394 924717	3610360 1470950 1131590	10.4%	10.9%	47
9th decile	\$18.29	health treating/assessment other exec, admin, mgrs mgt. rel.	hospital service FIRE public administration	115860 3 892434	1245099 1234921 521320	9.8%	10.4%	73
highest decile	\$22.41	other exec, admin, mgrs engineers other exec, admin, mgrs	manuf. durable goods manuf. durable goods manuf. nondurable goods	867057 664997 650730	1142805 807403 739194	9.7%	11.1%	89

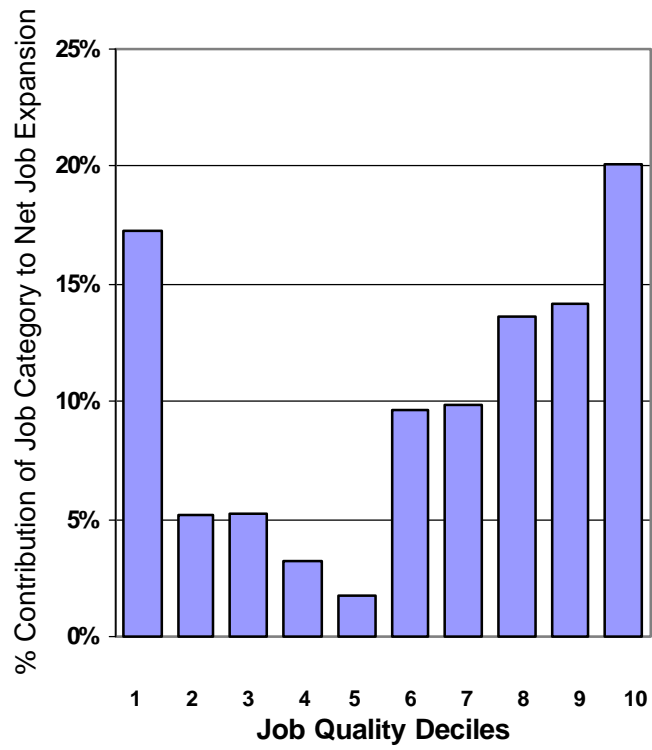


Figure 1. Contributions of job quality deciles to net job expansion, 1992-1999

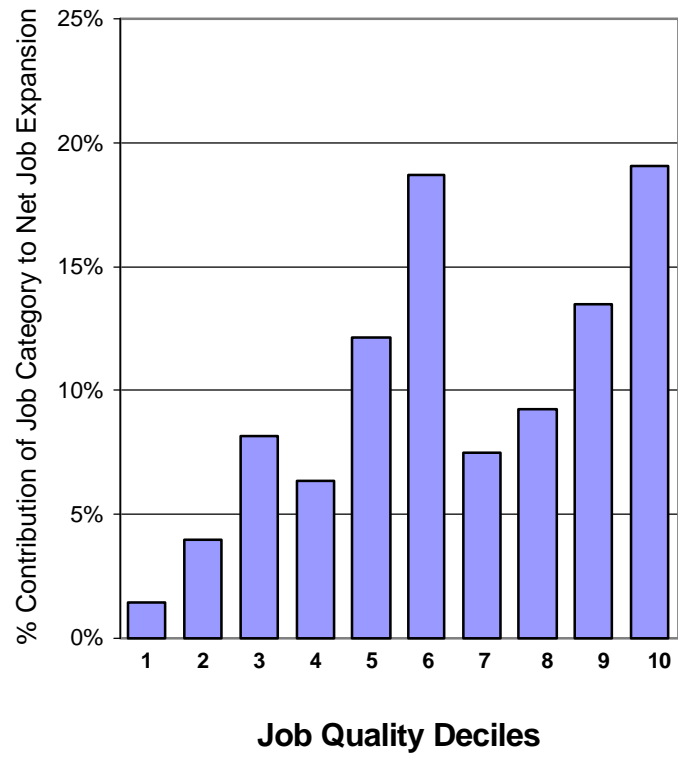


Figure 2. Contributions of job quality deciles to net job expansion, 1963-1970

Job expansion for Employees 30-55 years of age

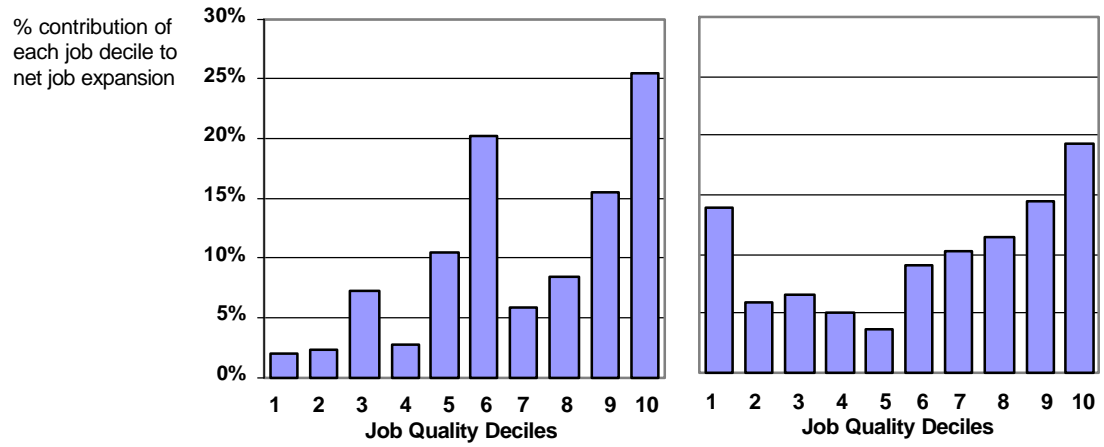


Figure 3. Contribution of job quality deciles to net job expansion among employees aged 30-55, 1960s and 1990s

Part time job expansion, 1992-1999

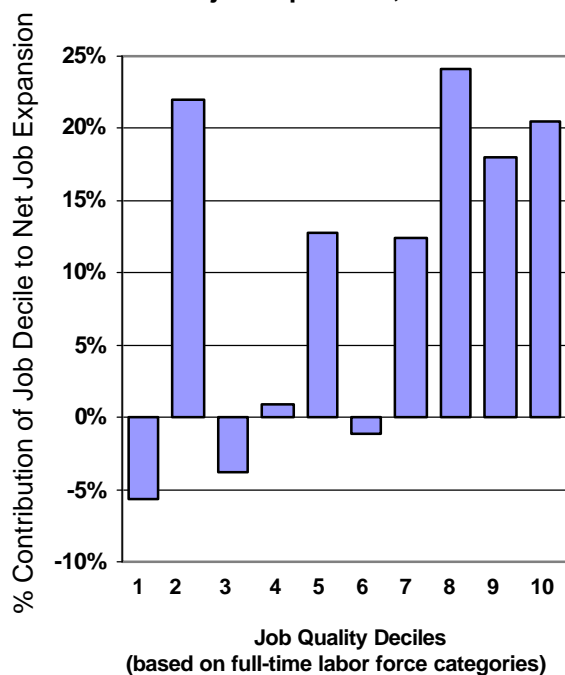


Figure 4. Contributions of job quality deciles to expansion of part-time jobs, 1992-1999

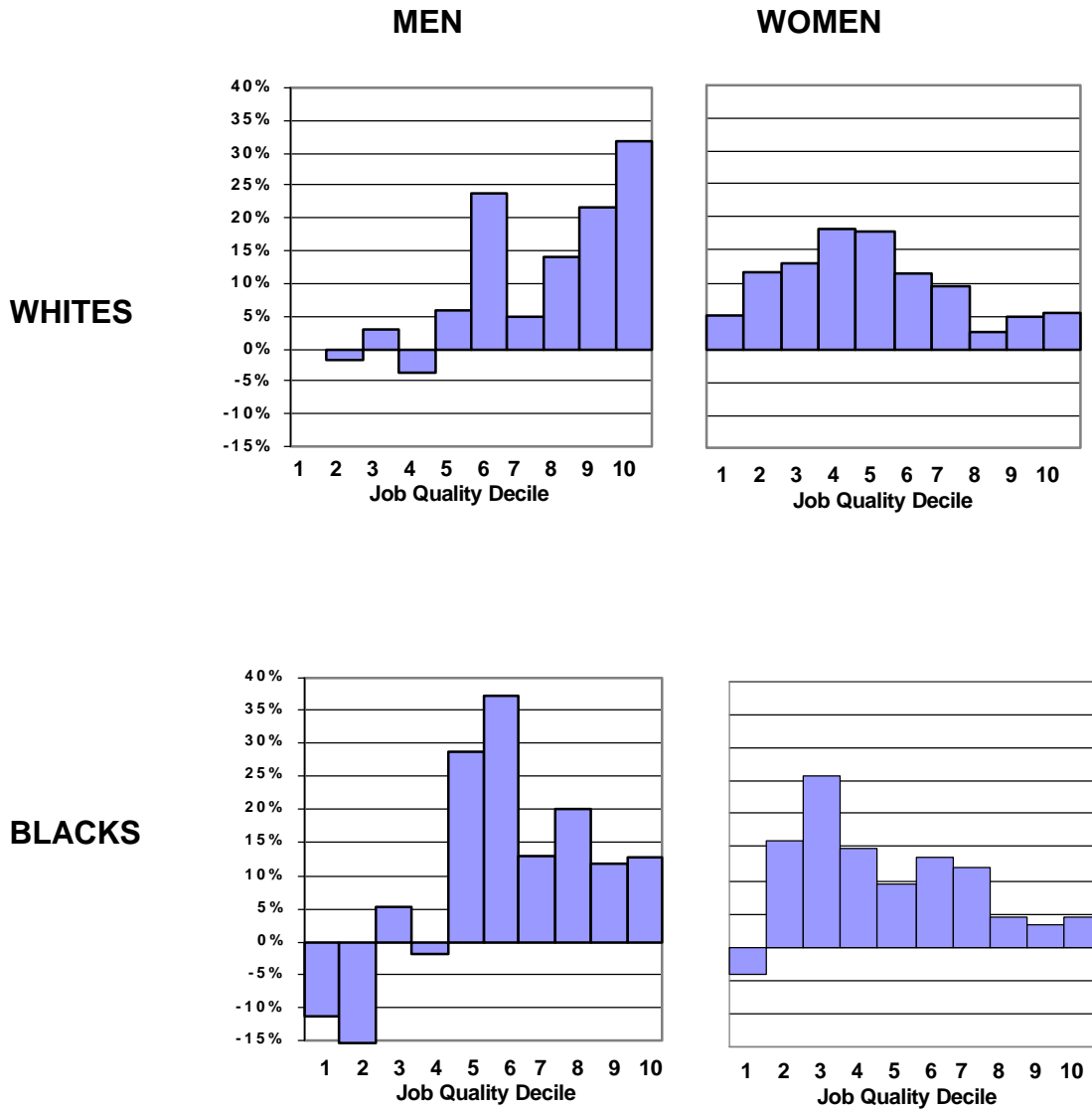


Figure 5. Contributions of job quality deciles to net job expansion within race and gender categories, 1963-1970

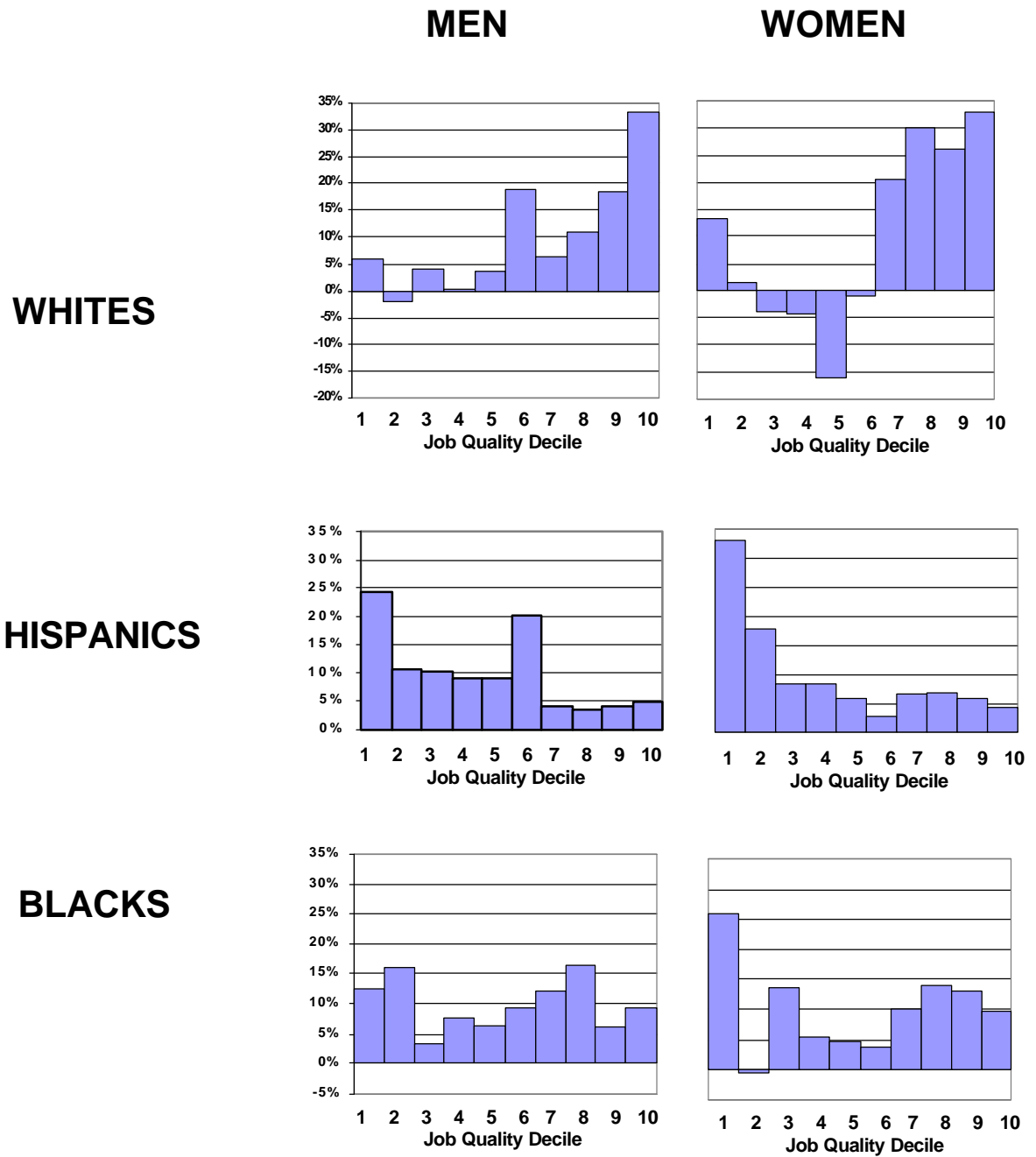


Figure 6. Contributions of job quality deciles to net job expansion within race and gender categories, 1992-1999

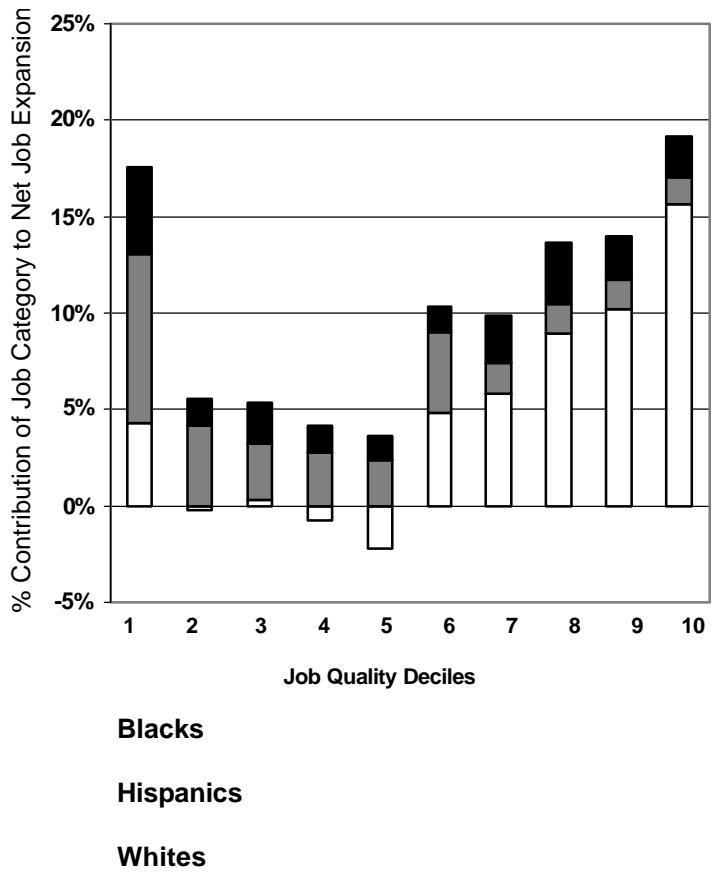


Figure 7. Racial polarization in the 1990s job expansion