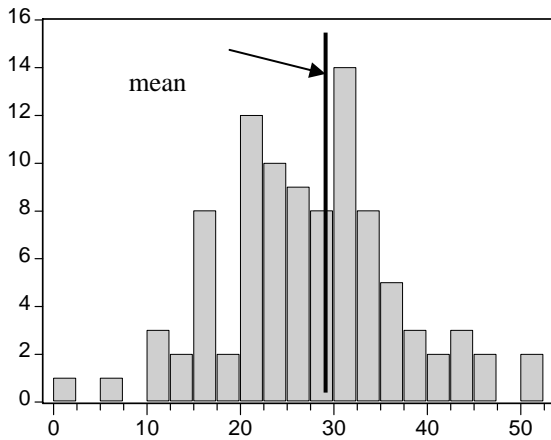


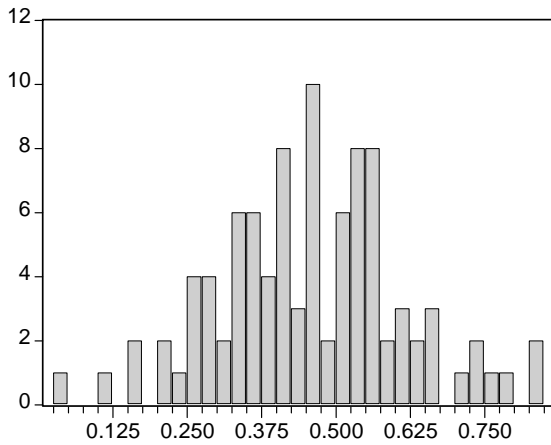
Midterm Exam 2 Statistics/Grading (revised)



Series: MT2	
Sample 1 102	
Observations 95	
Mean	27.25263
Median	27.00000
Maximum	50.00000
Minimum	2.00000
Std. Dev.	9.322780
Skewness	0.081866
Kurtosis	3.093047
Jarque-Bera	0.140385
Probability	0.932214

Grade	Range	N	% of total
A	50-37	14	14.7%
AB	36-33	11	11.6%
B	32-28	22	23.2%
BC	27-25	9	9.5%
C	17-24	28	29.5%
D&F	2-16	11	11.6%

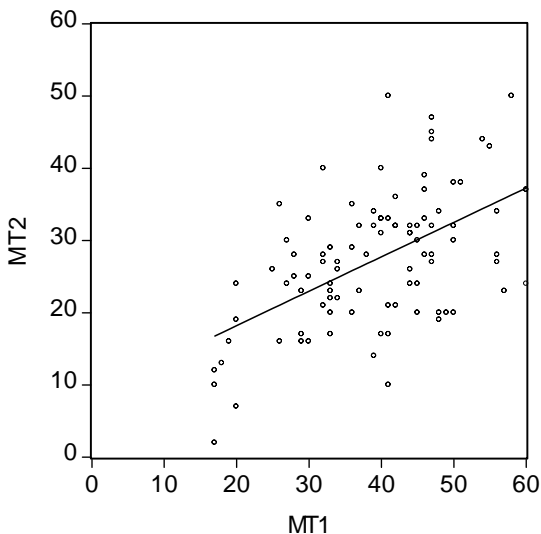
Grade ranges below are for indicative purposes only. Your overall course grade will be a weighted average of point scores.



Series: MT2/60	
Sample 1 102	
Observations 95	
Mean	0.454211
Median	0.450000
Maximum	0.833333
Minimum	0.033333
Std. Dev.	0.155380
Skewness	0.081866
Kurtosis	3.093047
Jarque-Bera	0.140385
Probability	0.932214

Normalized scores (i.e., scores divided by 60)

MT2 vs. MT1



Scatterplot of Midterm 2 scores against Midterm 1 scores.