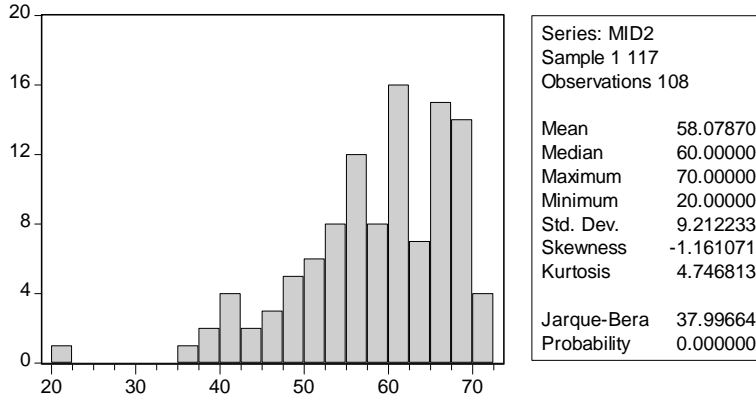


Midterm 2 Summary Statistics and Advisory Grading Curve

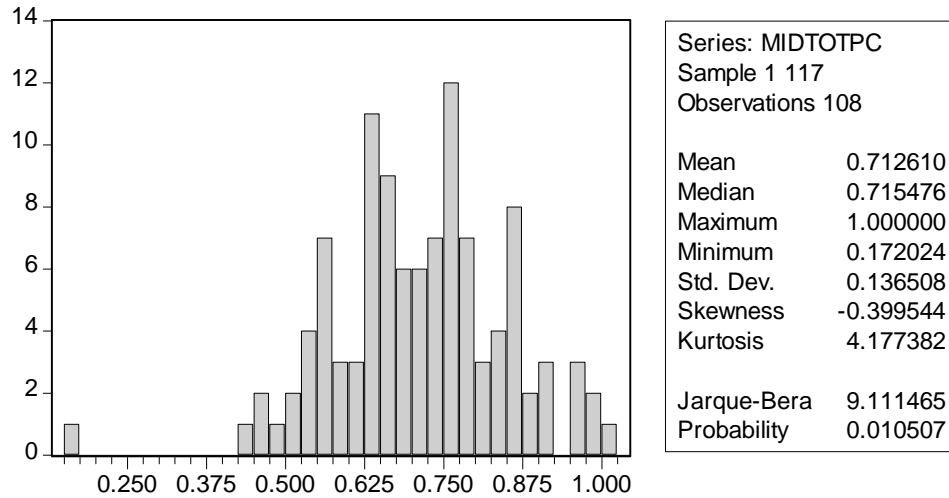


	Points	Ratio	Proportion of Class (approx..)
A	66-70	0.667-1.000	21%
B	56-65	0.800-0.929	46%
C	44-55	0.629-0.786	24%
D/F	0-43	0.000-0.614	8%

Note: These grades are merely indicative, and are not recorded. **What matters is your cumulative grade.** To calculate your cumulative score for both midterms, find:

$$MIDTOTPC = [(MID1/60) + (MID2/70)] \times 0.5$$

Below is a class histogram for *MIDTOTPC*, calculated using the above equation.



Note: Above histogram is based upon student scores where both midterms have been taken. 7 students that took the first midterm did not take the second.

	MIDTOTPC	Proportion of Class (approx.)
A	0.830-1.000	21%
B	0.657-0.824	45%
C	0.538-0.654	25%
D/F	0.000-0.537	8%