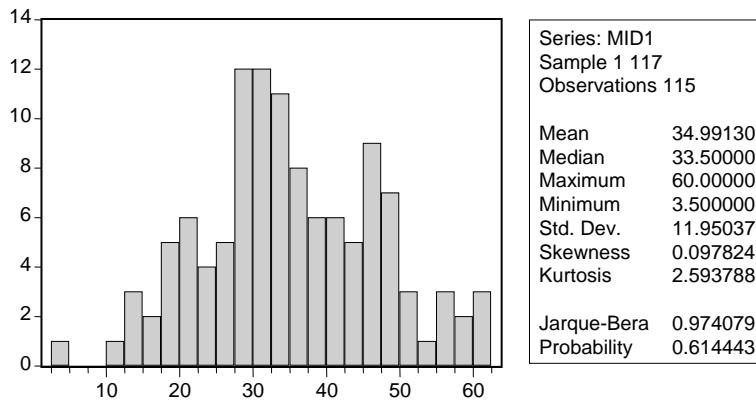
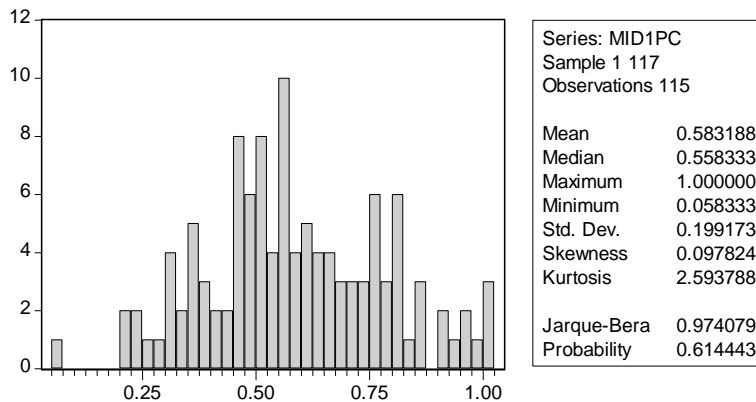


Midterm 1 Summary Statistics and Advisory Grading Curve



	Points	Ratio	Proportion of Class (approx..)
A	46-60	0.667-1.000	21%
B	30-45.5	0.500-0.758	44%
C	19-29.5	0.317-0.492	26%
D	12-18	0.200-0.300	9% (D+F)
F	0-3.5	0.000-0.058	



68% (95%) of observations fall within ± 1 (± 2) standard deviation(s) of mean.

