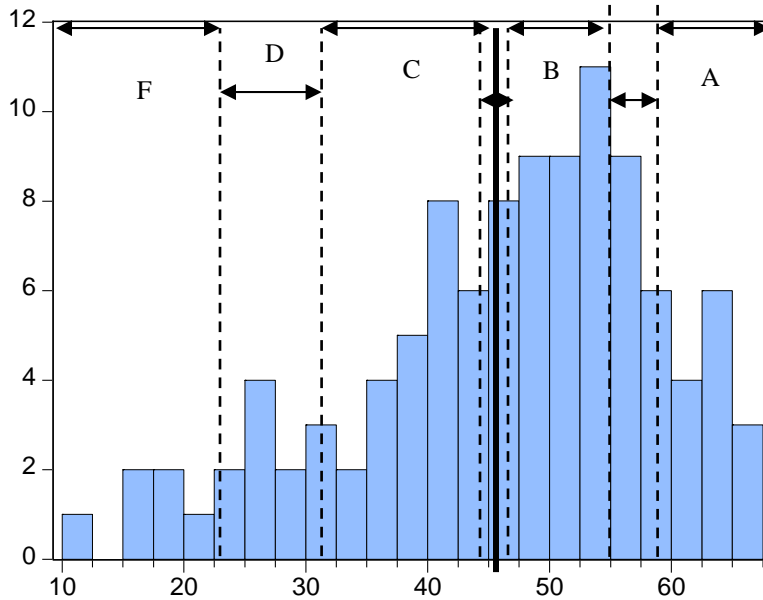


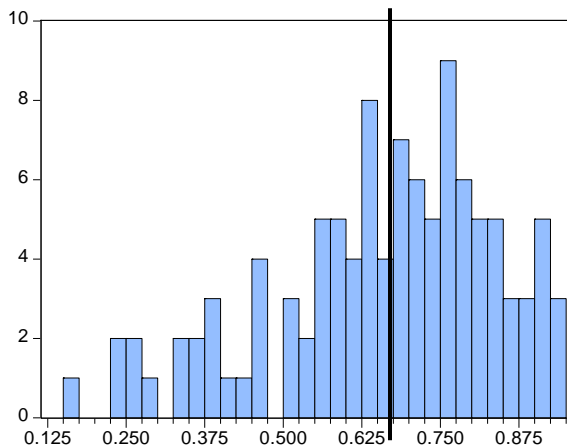
### Midterm Exam 1 Statistics/Grading



Series: MT1	
Sample 1 109	
Observations 107	
Mean	45.95794
Median	48.00000
Maximum	66.00000
Minimum	10.50000
Std. Dev.	12.67409
Skewness	-0.658915
Kurtosis	2.845044
Jarque-Bera	7.849738
Probability	0.019745

**Grade ranges below are for indicative purposes only.** Your overall course grade will be a weighted average of point scores.

Grade	Range	N	% of total
A	66-59	17	15.9%
AB	58.5-55.5	10	9.3%
B	55-48	27	25.2%
BC	47.5-45	11	10.3%
C	44.5-31.5	27	25.2%
D	30-23	9	8.4%
F	20.5-10.5	6	5.6%



Series: MT1RATIO	
Sample 1 109	
Observations 107	
Mean	0.656542
Median	0.685714
Maximum	0.942857
Minimum	0.150000
Std. Dev.	0.181058
Skewness	-0.658915
Kurtosis	2.845044
Jarque-Bera	7.849738
Probability	0.019745

Normalized scores (i.e., scores divided by 70) 13.10.2010