

File Flow for
“Trends in Educational Assortative Marriage From 1940 to 2003”
Christine R. Schwartz and Robert D. Mare

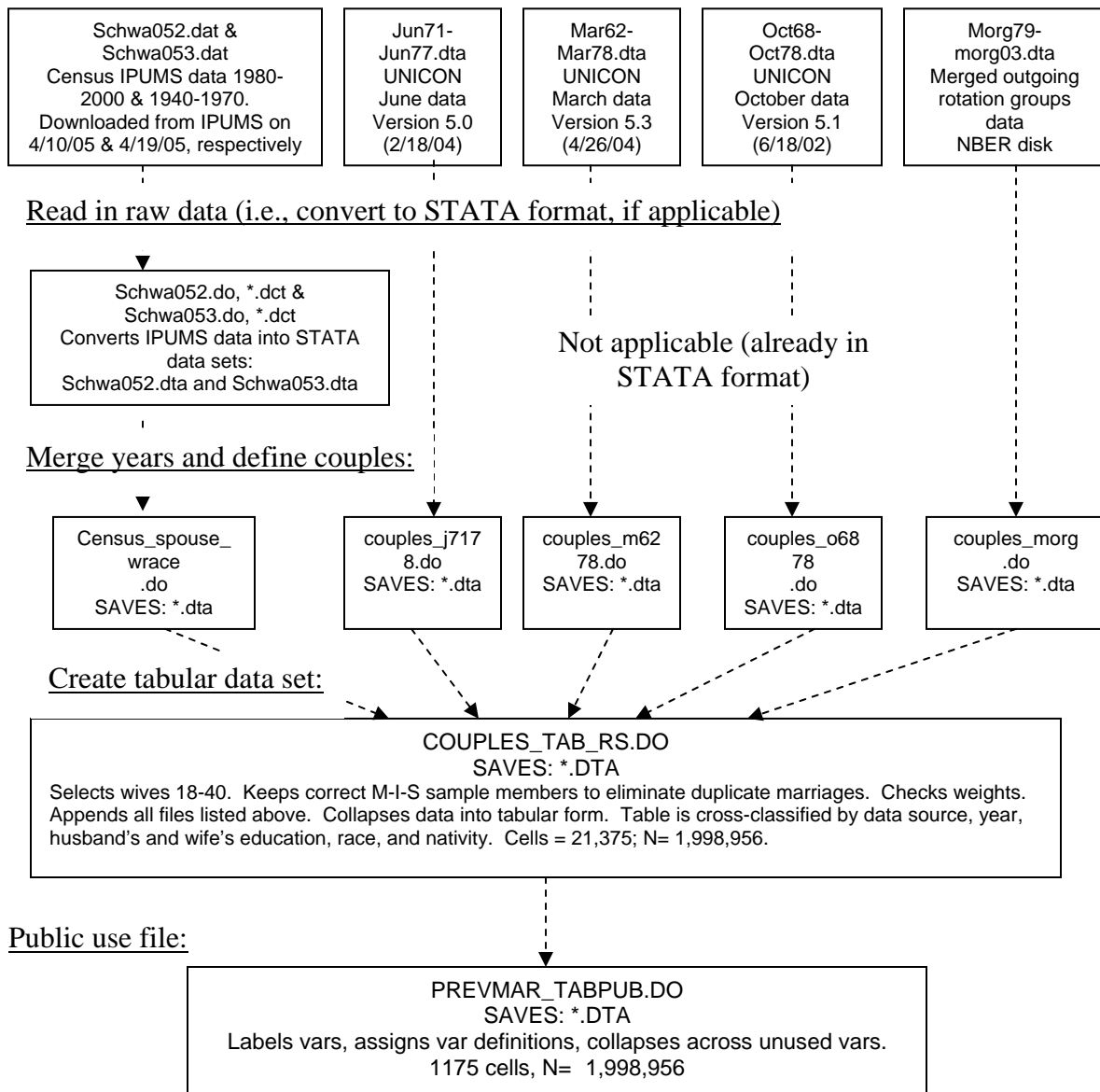
Prevailing Marriages:

Raw data

NOTE: Census “.dat” files were downloaded directly from the IPUMS website (www.ipums.org). Please see schwa052.cbk, and schwa053.cbk for variables downloaded and for other sample details. These “.cbk” files were automatically produced by the IPUMS website when the data were downloaded.

The CPS data sets from UNICON were produced by extracting the necessary variables using the “CPS Utilities” application. The files jun77rpt.htm, mar78rpt.htm, and oct78rpt.htm show the variables extracted for the June, March, and October CPS’s, respectively. A “rpt” file was generated automatically for each year, but I include a single year for illustrative purposes.

The MORG data (morg79-morg03.dta listed below) are available in STATA format from NBER.

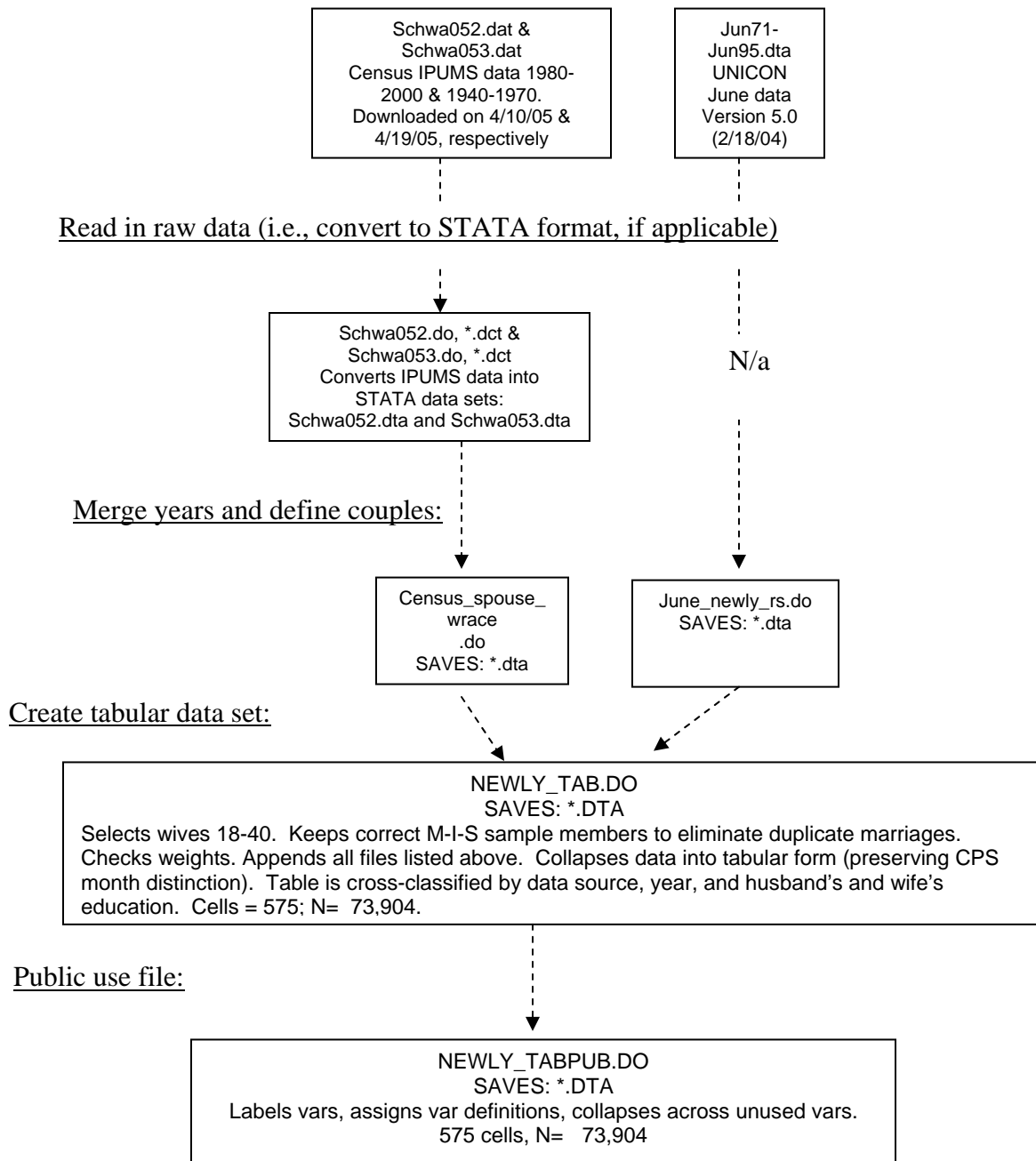


Newlyweds:

Raw data:

NOTE: Census “.dat” files were downloaded directly from the IPUMS website (www.ipums.org). Please see schwa052.cbk, and schwa053.cbk for variables downloaded and for other sample details. These “.cbk” files were automatically produced by the IPUMS website when the data were downloaded.

The CPS data sets from UNICON were produced by extracting the necessary variables using the “CPS Utilities” application. The file jun95rpt.htm shows the variables extracted for the June CPS. A “rpt” file was generated automatically for each year, but I include a single year for illustrative purposes.



File	Source	Data
Tables in Paper		
Table 2. TABLE 2.XLS	desc.log	prevmar_tabpub.dta
Table 3. TMODEL.DOC	modeltest.log	prevmar_tabpub.dta
Table 4. TABLE 4.XLS	analysis_prev.log	prevmar_tabpub.dta
Figure 1. FIGURE 1.XLS	desc.log	prevmar_tabpub.dta newly_tabpub.dta
Figure 2. FIGURE 2. XLS	desc.log	prevmar_tabpub.dta newly_tabpub.dta
Figure 3. FIGURE 3.XLS	desc.log	prevmar_tabpub.dta newly_tabpub.dta
Figure 4. FIGURE 4.DOC	analysis_prev.log, analysis_newly.log, graph_new_prev.do	couples_tabpub.dta newly_tabpub.dta
Figure 5. FIGURE 5.DOC	analysis_prev.log, analysis_newly.log, graph_new_prev.do	couples_tabpub.dta newly_tabpub.dta
Appendix Table 1. APPENDIX TABLE 1.XLS	desc.log	couples_tabprev.dta
Upon Request Tables and Figures		
TMODEL_UPONREQUEST.DOC <ul style="list-style-type: none"> Fit statistics for newlyweds Fit statistics for uniform association models 	modeltest.log modeltest_newly.log	prevmar_tabpub.dta newly_tabpub.dta
ODSDCNEWLY.DOC <ul style="list-style-type: none"> Crossings parameters for newlyweds 	analysis_newly.log graph_new_prev.do	newly_tab.dta
ODDSH_2140.DOC <ul style="list-style-type: none"> Odds of homogamy for 21 to 40 year olds 	analysis_prev_2140.do	couples_tab_2140.dta
ODSDC_2140.DOC <ul style="list-style-type: none"> Crossings parameters for 21 to 40 year olds 	analysis_prev_2140.do	couples_tab_2140.dta
ODDSUA.DOC <ul style="list-style-type: none"> Uniform association parameters for prevailing marriages and newlyweds. 	analysis_prev.log, analysis_newly.log, graph_new_prev.do	prevmar_tabpub.dta
DESC6CAT.DOC <ul style="list-style-type: none"> Descriptive statistics for 6-category education classification 	desc_d.log	couples_tab_d.dta

ODDSH_6CAT.DOC <ul style="list-style-type: none"> Odds of homogamy for 6-category education classification 	analysis_prev_d.log	couples_tab_d.dta
ODSDC_6CAT.DOC <ul style="list-style-type: none"> Odds of crossing for 6-category education classification 	analysis_prev_d.log	couples_tab_d.dta
DESC7CAT.DOC <ul style="list-style-type: none"> Descriptive statistics for 7-category education classification 	desc_dd.log	couples_tab_dd.dta
ODDSH_7CAT.DOC <ul style="list-style-type: none"> Odds of homogamy for 7-category education classification 	analysis_prev_dd.log	couples_tab_dd.dta
ODSDC_7CAT.DOC <ul style="list-style-type: none"> Odds of crossing for 7-category education classification 	analysis_prev_dd.log	couples_tab_dd.dta
ROBUSTTO40.DOC <ul style="list-style-type: none"> Trends without 1940 	analysis_prev_no40.log	prevmar_tabpub.dta
UNWEIGHTED.DOC <ul style="list-style-type: none"> Unweighted trends 	analysis_prev_unweight ed.log	prevmar_tabpub.dta
Other Results		
BYSOURCE.DOC <ul style="list-style-type: none"> Crossings and homogamy by data source, prevailing marriages 	analysis_prev.log	prevmar_tabpub.dta