

Prison admission rates in Wisconsin Counties 2000-2014

Pamela Oliver, PhD, University of Wisconsin-Madison

Data source: National Corrections Reporting Program restricted term data file. Calculations of rates per 100,000 divide the number admitted to prison in a given category by the population of that race (all ages & sexes). A rate of 1000 equals 1%.

Milwaukee, Dane, Kenosha and Racine counties have enough Black residents for separate analysis. All other counties are grouped together.

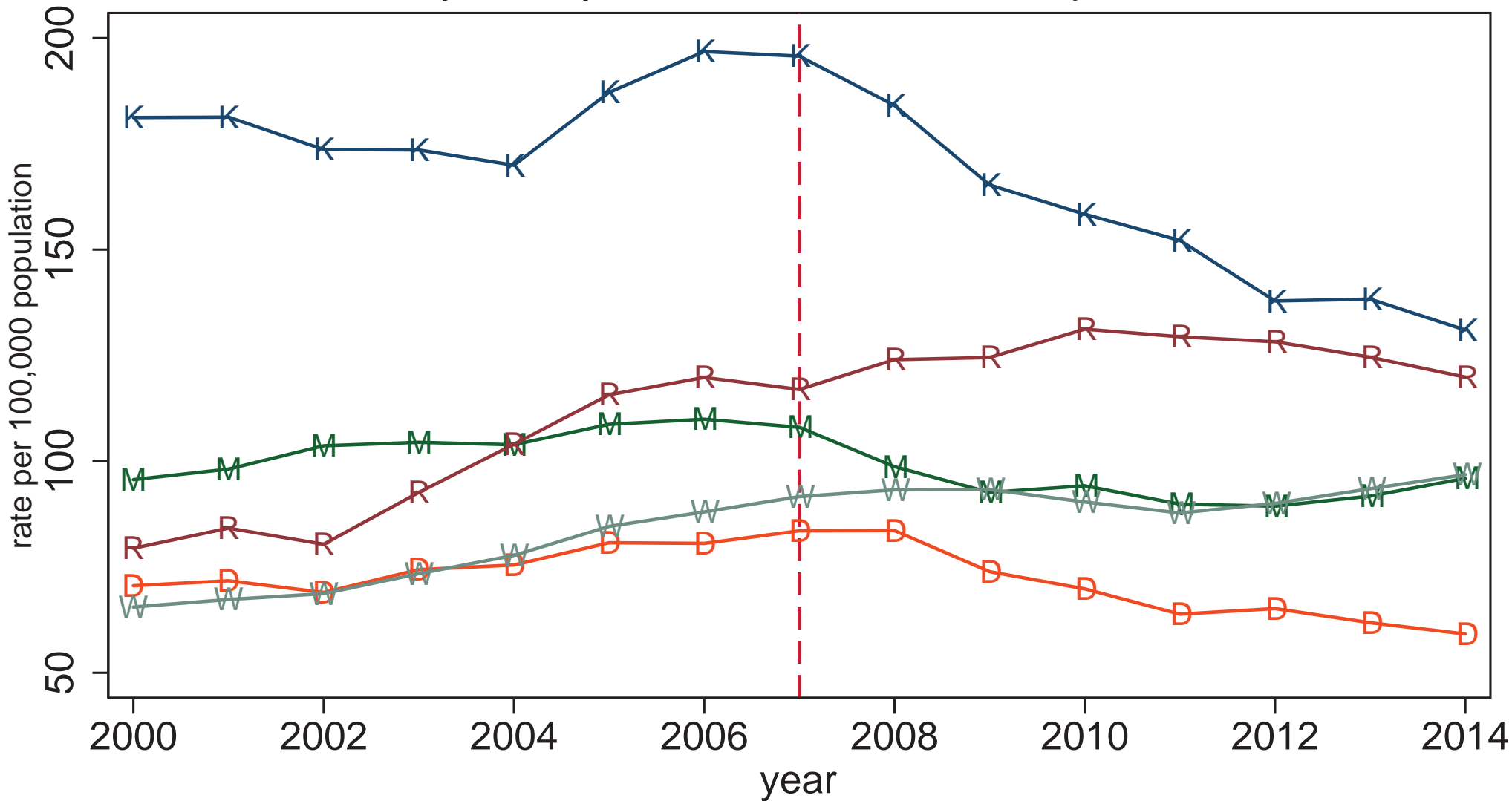
A vertical line marks 2007.

Permission to reproduce this material is freely granted for educational or other non-profit purposes as long as proper attribution is given.

White prison admission rates per
100,000 White residents, all ages &
sexes.

White rate of prison admissions

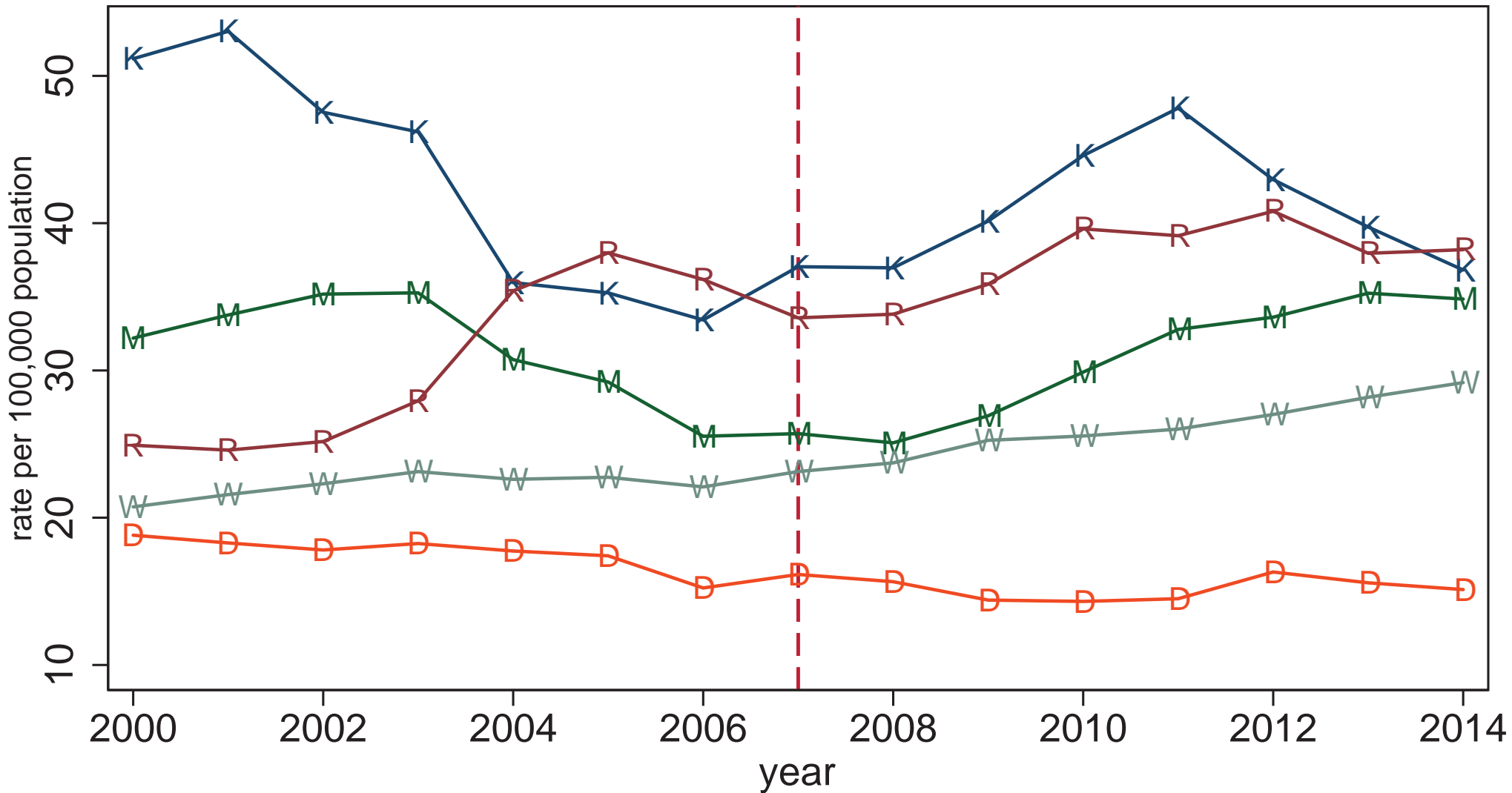
By county where sentence was imposed



Three-year moving averages

White rate of new sentences with no revocation

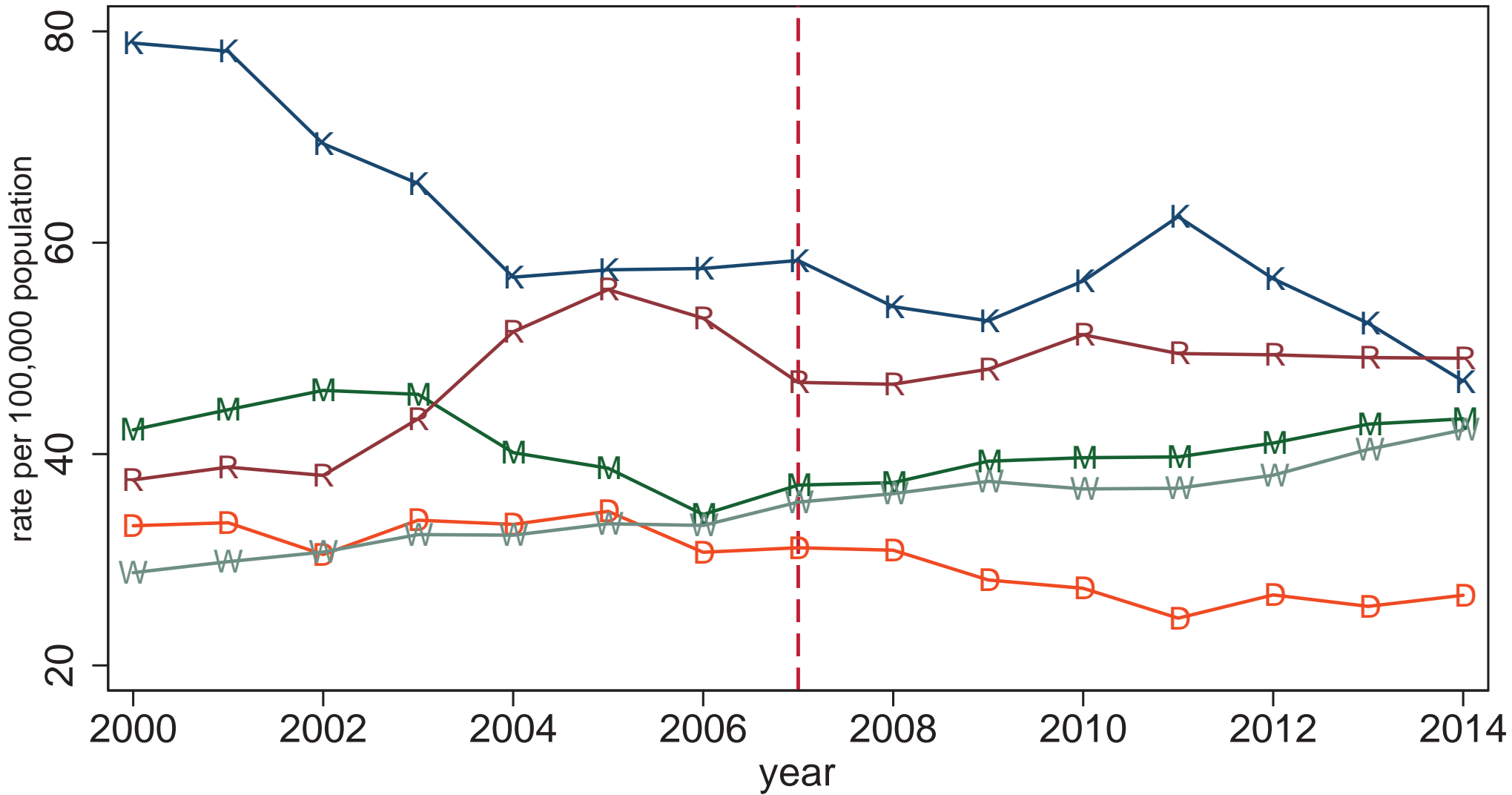
By county where sentence was imposed



Three-year moving averages

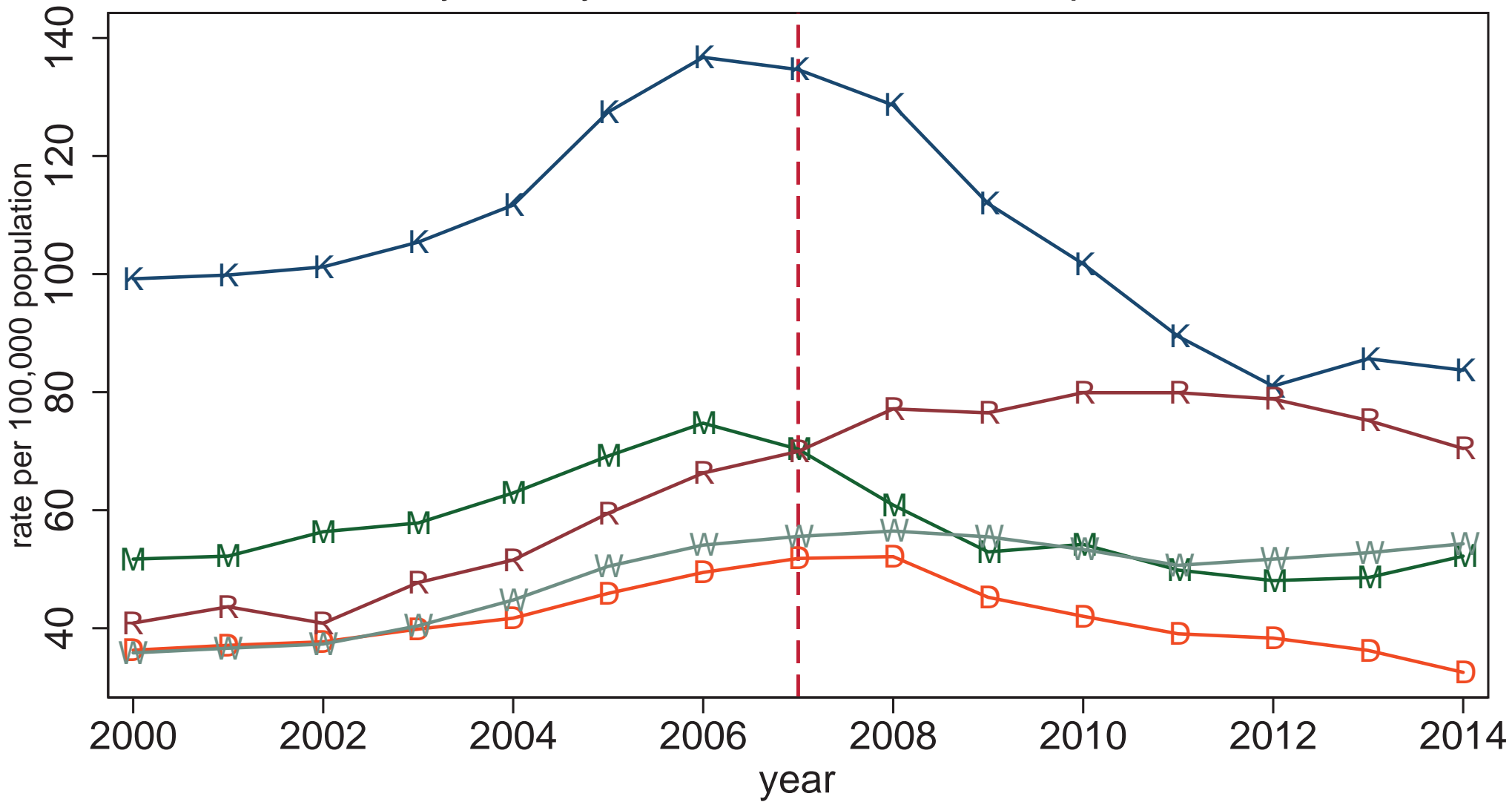
White rate of all new sentences, with or without revocation

By county where sentence was imposed



Three-year moving averages

White rate of revocation only, probation + post-prison By county where sentence was imposed

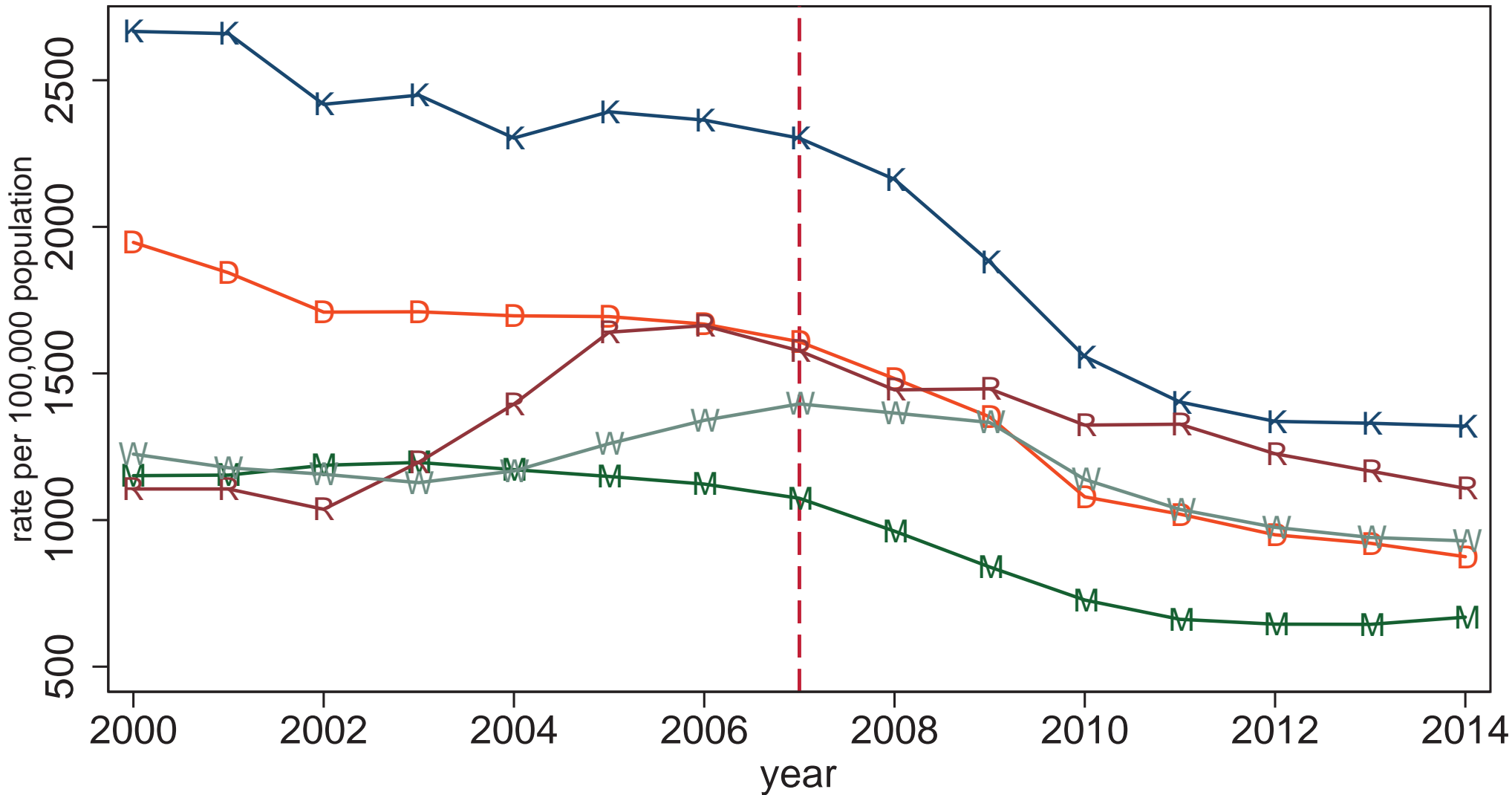


Three-year moving averages

Black prison admissions per 100,000
Black residents, all ages & sexes

Black rate of prison admissions

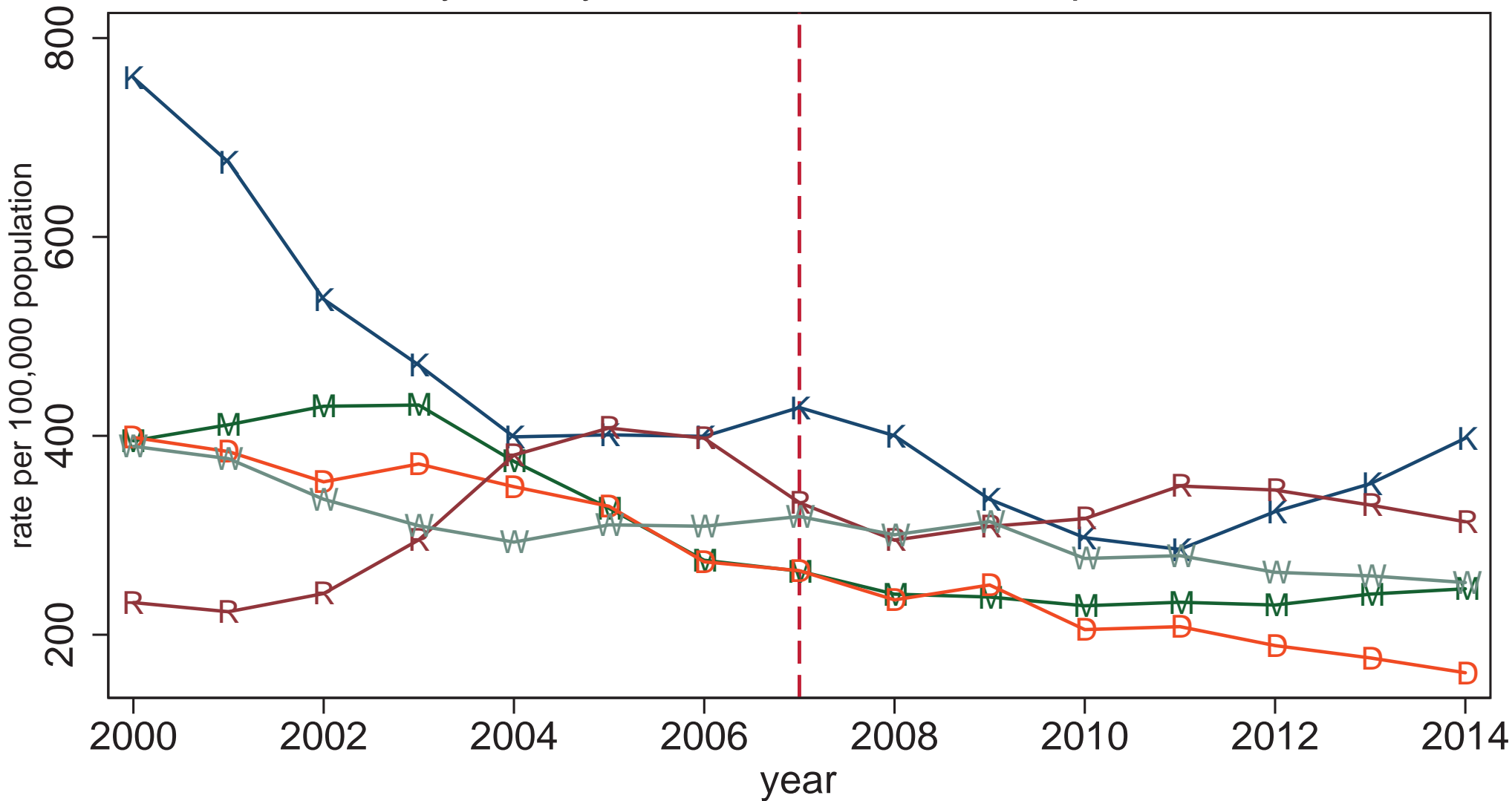
By county where sentence was imposed



Three-year moving averages

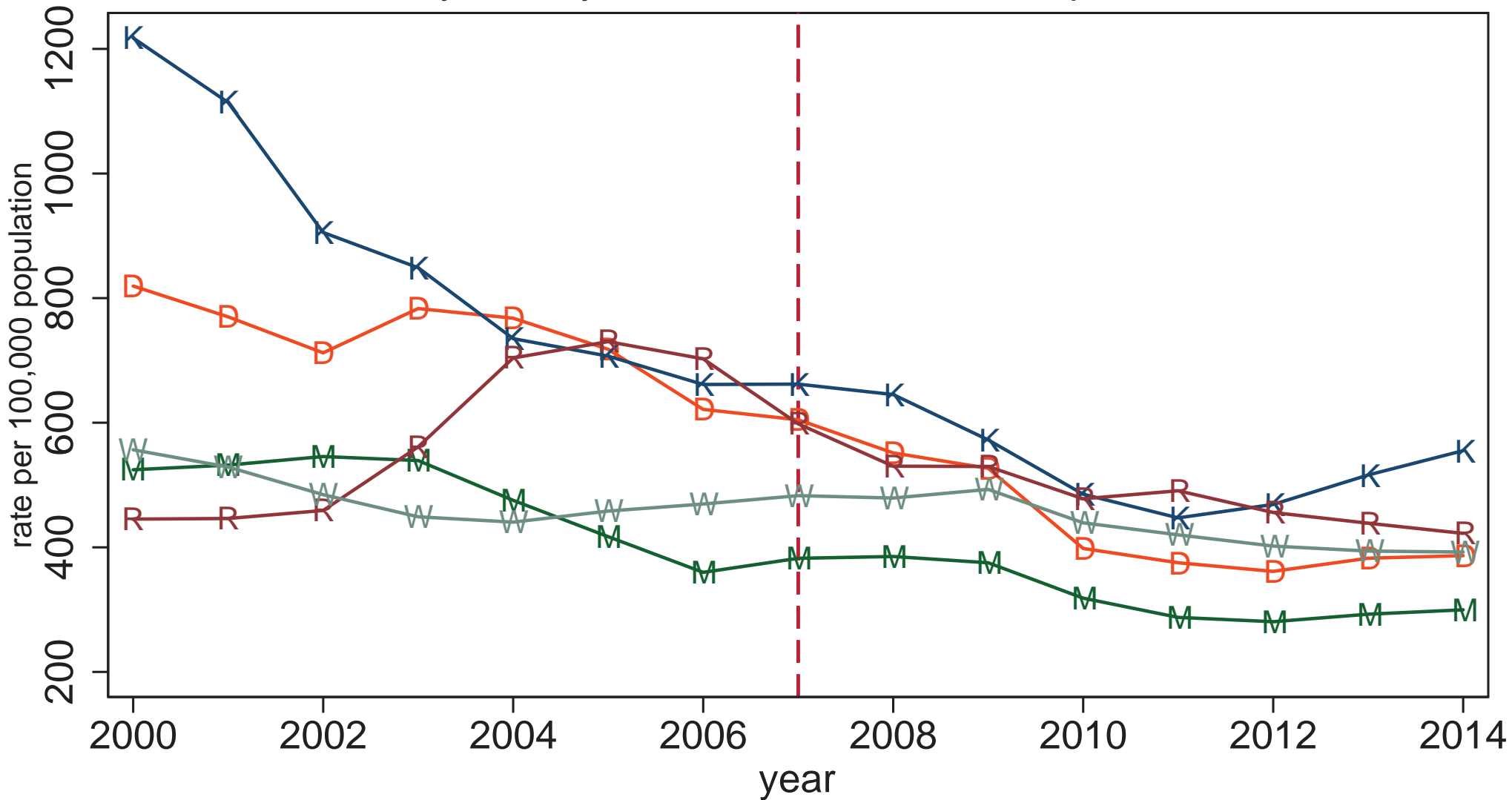
Black rate of new sentences with no revocation

By county where sentence was imposed



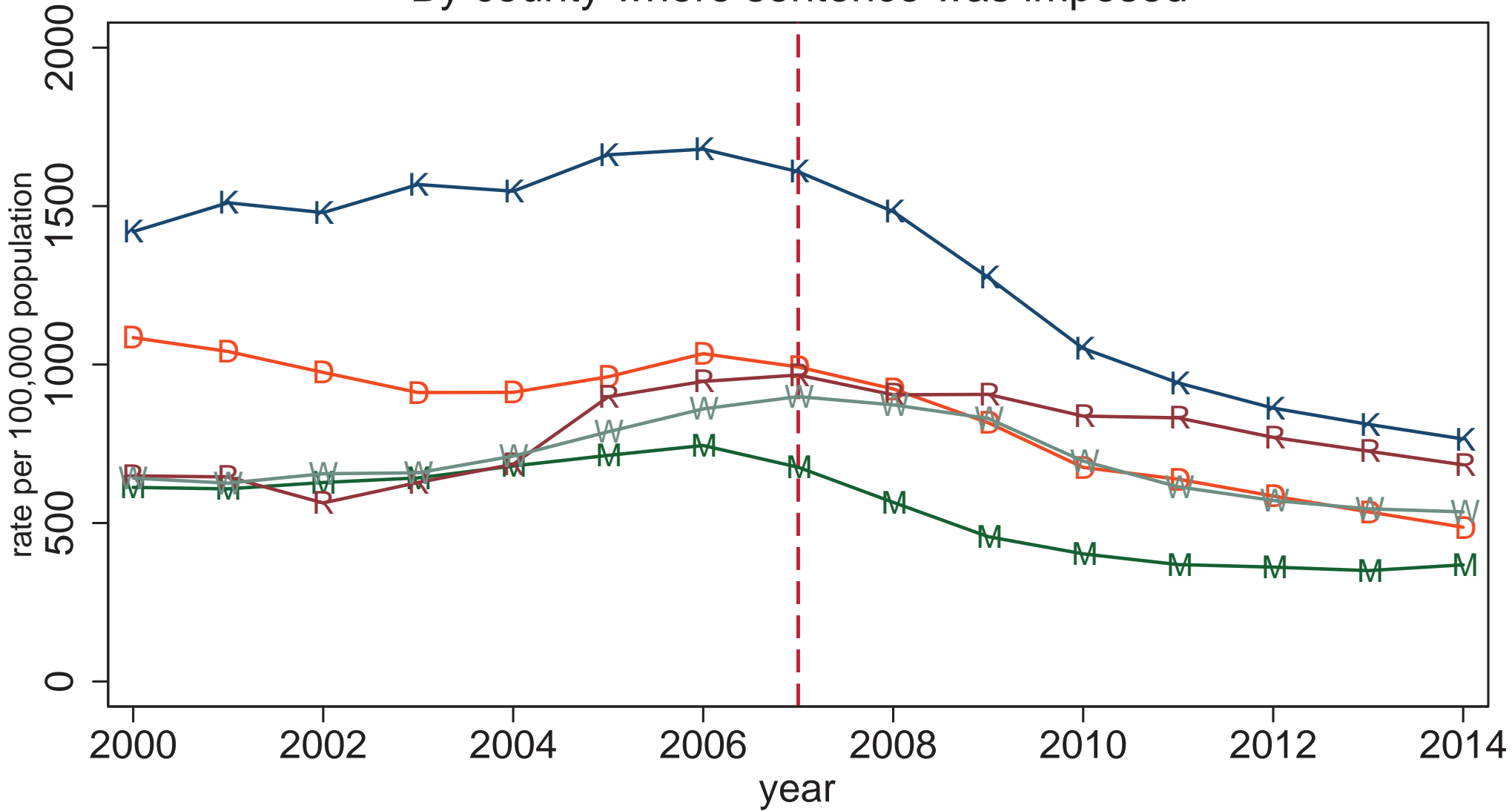
Three-year moving averages

Black rate of all new sentences, with or without revocation By county where sentence was imposed



Three-year moving averages

Black rate of revocation only, probation + post-prison By county where sentence was imposed



— Milwaukee
 — Dane
 — Kenosha
 — Racine
 — Wisc other

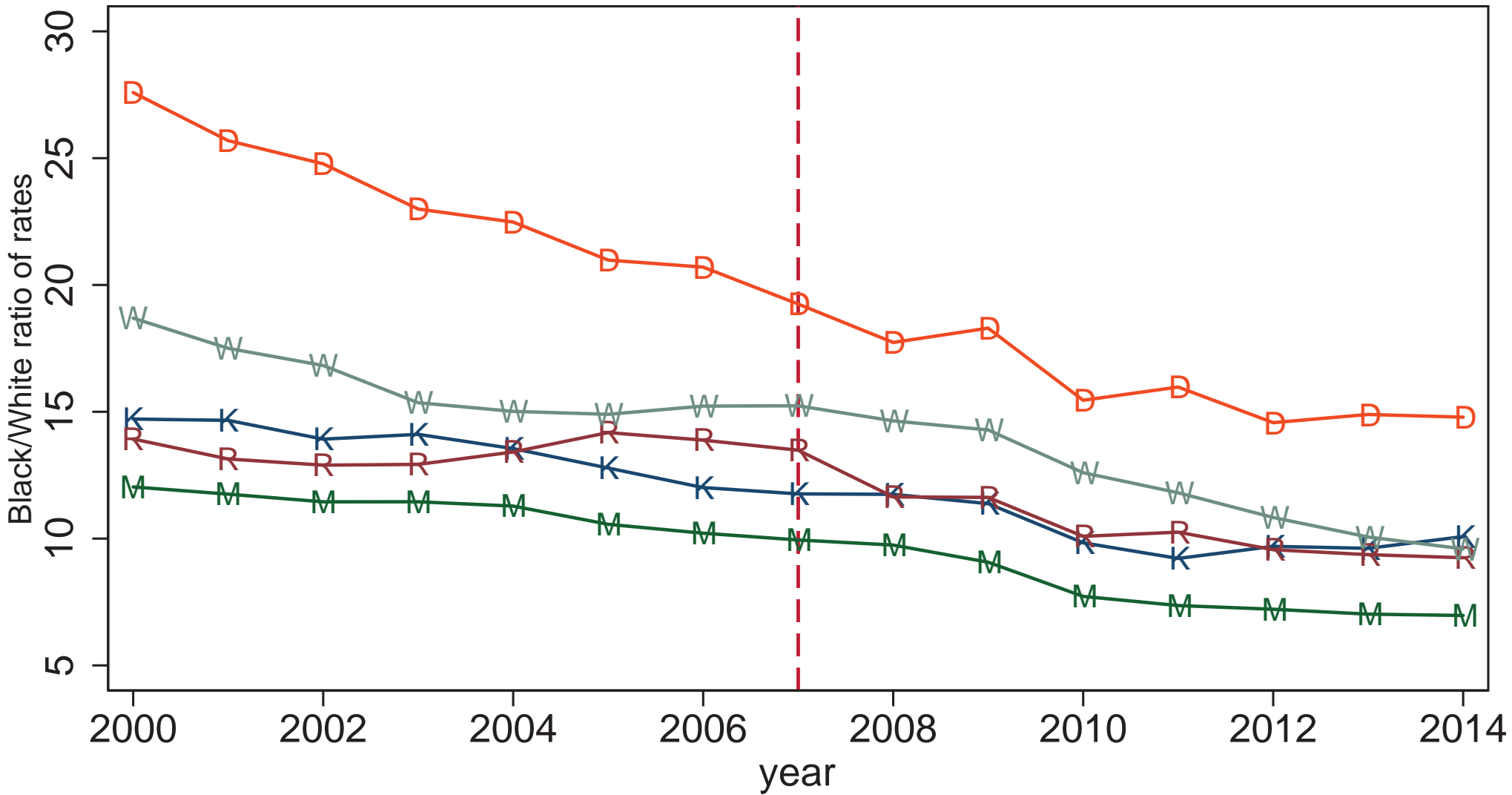
Three-year moving averages

Black/White disparity ratio (Black rate divided by White rate)

May be correctly interpreted as the relative odds of being in state prison, e.g. a disparity ratio of 10 means that a randomly chosen Black resident is 10 times more likely to be in prison than a randomly chosen White resident.

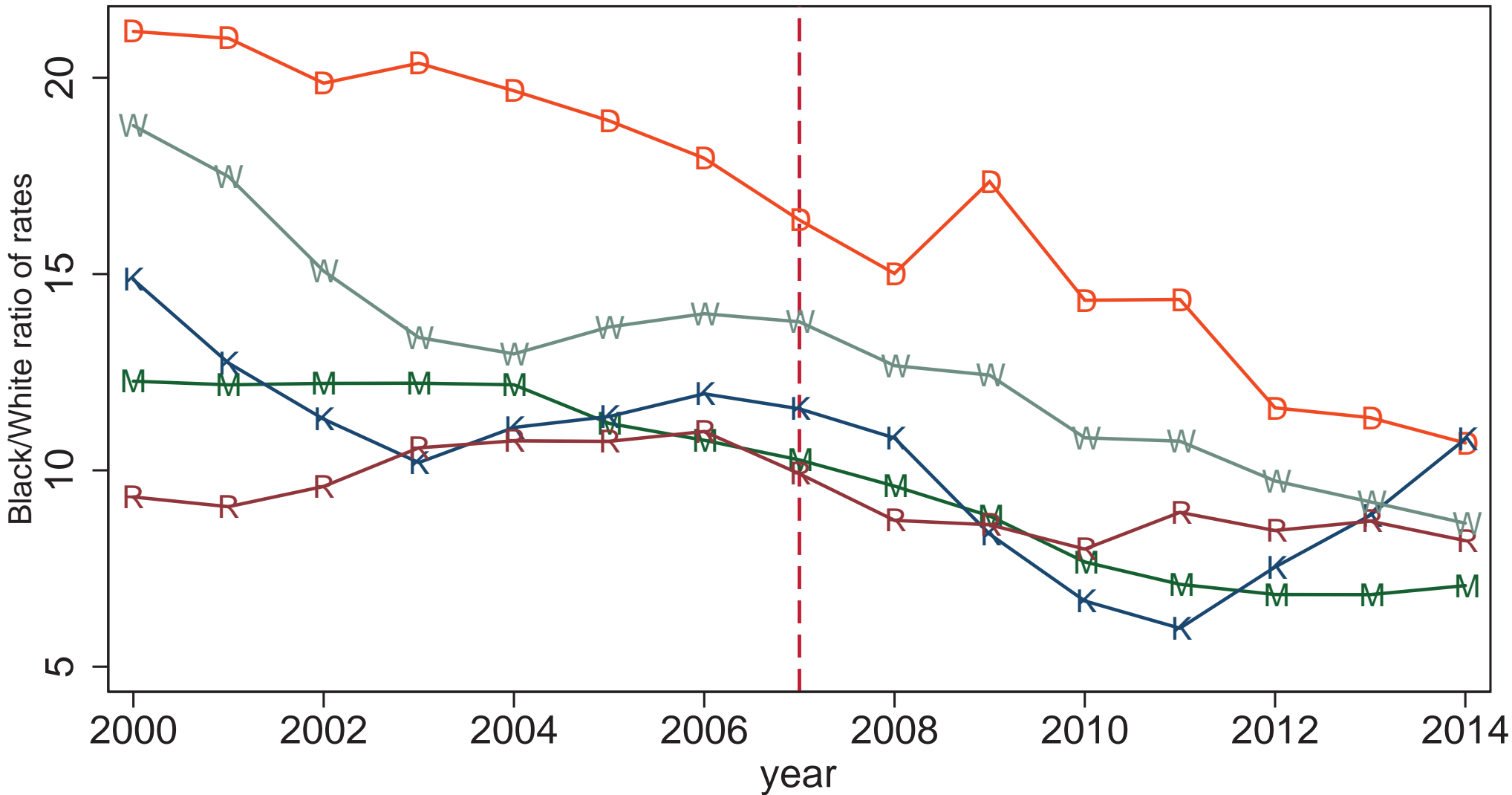
Black/White disparity in rate of prison admissions

By county where sentence was imposed



Three-year moving averages

Black/White disparity in rate of new sentences with no revocation By county where sentence was imposed

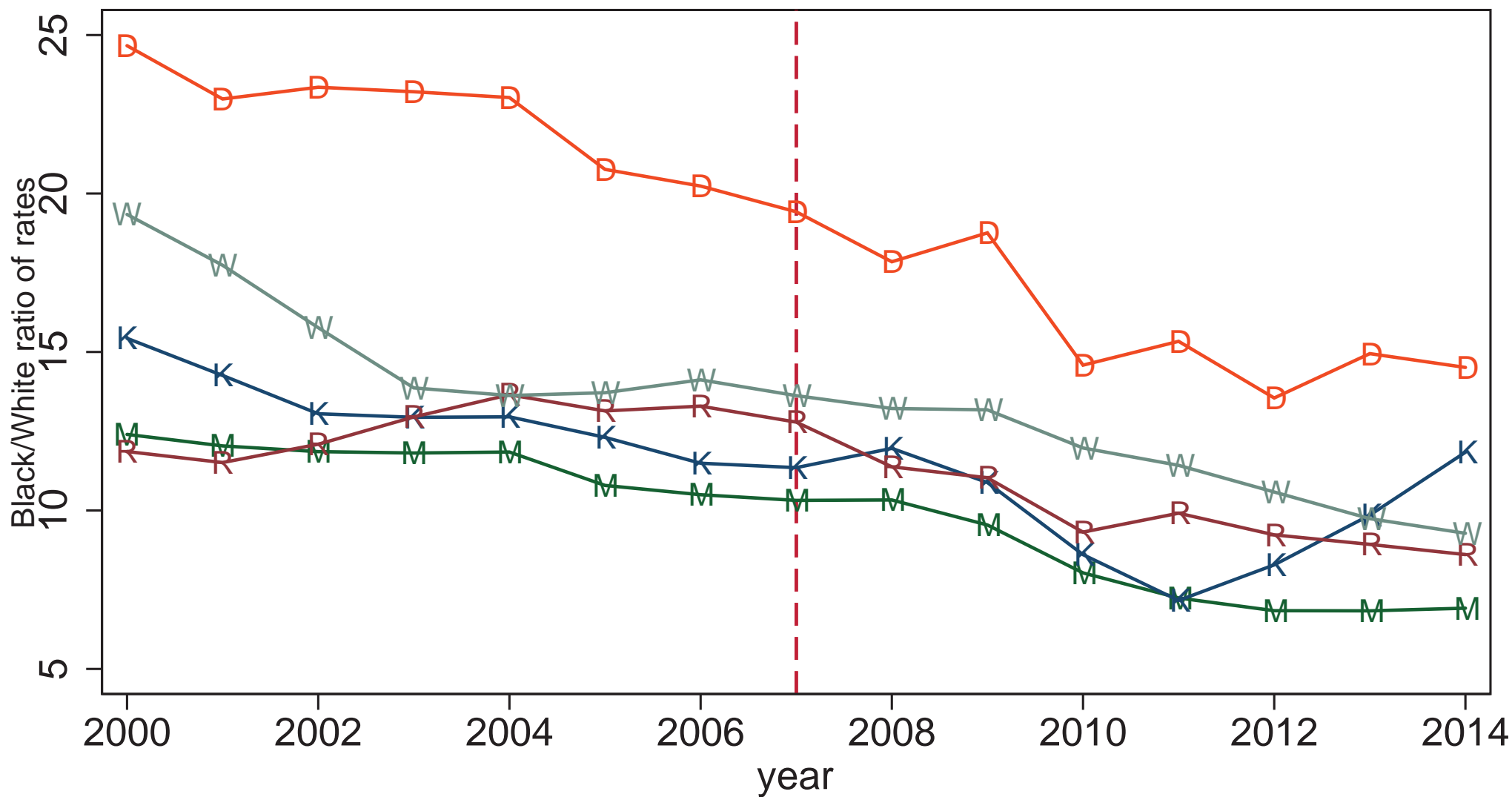


— Milwaukee
 — Dane
 — Kenosha
 — Racine
 — Wisc other

Three-year moving averages

Black/White disparity in rate of all new sentences, with or without revocation

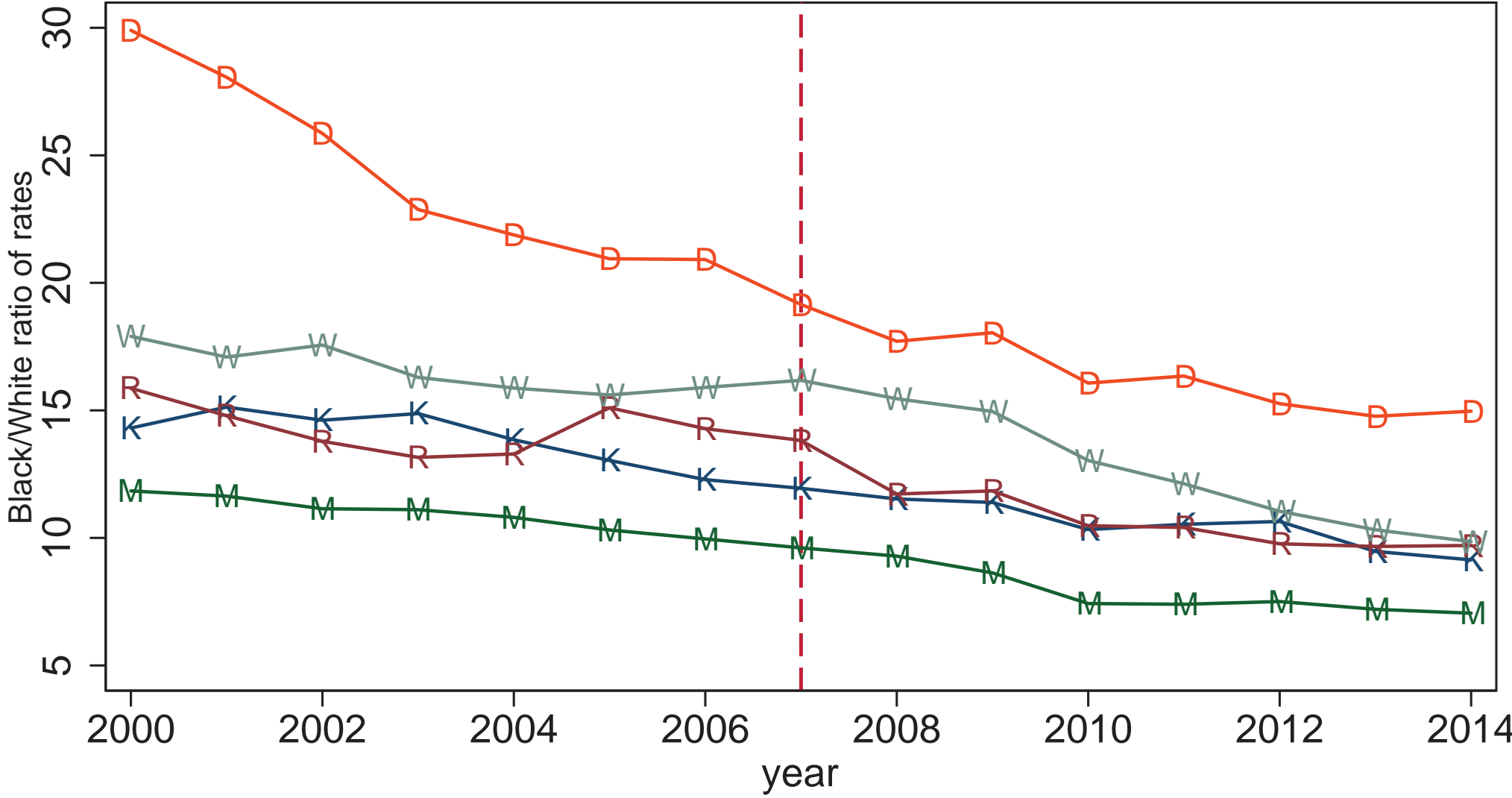
By county where sentence was imposed



Three-year moving averages

Black/White disparity in rate of revocation only, probation + post-prison

By county where sentence was imposed



— Milwaukee
 — Dane
 — Kenosha
 — Racine
 — Wisc other

Three-year moving averages